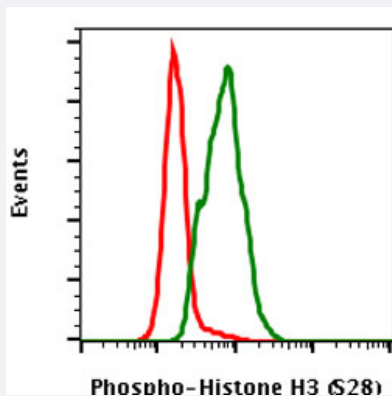


Histone H3 (phospho S28) monoclonal antibody, clone D6 (PE)

Catalog # MAB18920 Size 10 Reactions

Applications



Flow Cytometry

Flow cytometric analysis of HeLa cells with Histone H3 (phospho S28) monoclonal antibody, clone D6 (PE) (Cat # MAB18920). Stained untreated cells (red) or stained and treated with nocodazole (green).

Specification

Product Description	Rabbit monoclonal antibody raised against synthetic phosphopeptide of Histone H3.
Immunogen	A synthetic phosphopeptide corresponding to residues surrounding S28 of human Histone H3.
Host	Rabbit
Reactivity	Human, Mouse
Form	Liquid
Conjugation	PE
Purification	Protein A/G purification
Isotype	IgG1, kappa
Recommend Usage	Flow Cytometry (5 μ L/ 10^6 cells) The optimal working dilution should be determined by the end user.
Storage Buffer	In PBS, pH 7.4 (0.2% BSA, 0.09% sodium azide).

Storage Instruction

Store at 4°C.

Note

This product contains sodium azide: a POISONOUS AND HAZARDOUS SUBSTANCE which should be handled by trained staff only.

Applications

- Flow Cytometry

Flow cytometric analysis of HeLa cells with Histone H3 (phospho S28) monoclonal antibody, clone D6 (PE) (Cat # MAB18920). Stained untreated cells (red) or stained and treated with nocodazole (green).