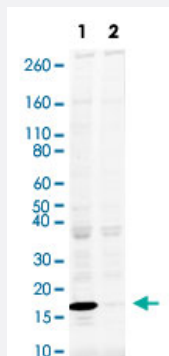


Histone H3 (phospho S28) monoclonal antibody, clone D6

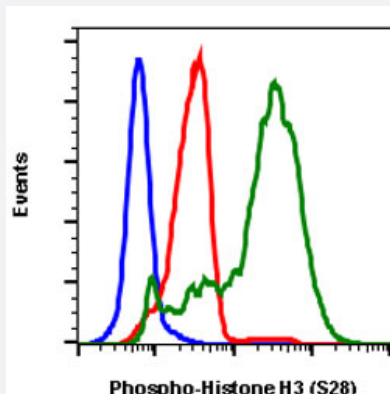
Catalog # MAB18914 Size 20 uL

Applications



Western Blot (Cell lysate)

Western Blot analysis of HeLa cell lysate with Histone H3 (phospho S28) monoclonal antibody, clone D6 (Cat # MAB18914). Lane 1: treated or Lane 2: untreated synchronized in metaphase by treatment with 0.4 ug/mL of nocodazole for 6 hr then metaphase cells were isolated by mitotic shake-off.



Flow Cytometry

Flow cytometric analysis of HeLa cells with Histone H3 (phospho S28) monoclonal antibody, clone D6 (Cat # MAB18914). Secondary antibody only negative control (blue) or untreated (red) or treated with nocodazole (green).

Specification

Product Description	Rabbit monoclonal antibody raised against synthetic phosphopeptide of Histone H3.
Immunogen	A synthetic phosphopeptide corresponding to residues surrounding S28 of human Histone H3.
Host	Rabbit
Reactivity	Human, Mouse
Form	Liquid
Purification	Protein A/G purification

Isotype	IgG1, kappa
Recommend Usage	Flow Cytometry Western Blot The optimal working dilution should be determined by the end user.
Storage Buffer	In PBS, pH 7.4 (50% glycerol, 0.1% BSA and 0.02% sodium azide).
Storage Instruction	Store at -20°C.
Note	This product contains sodium azide: a POISONOUS AND HAZARDOUS SUBSTANCE which should be handled by trained staff only.

Applications

- Western Blot (Cell lysate)

Western Blot analysis of HeLa cell lysate with Histone H3 (phospho S28) monoclonal antibody, clone D6 (Cat # MAB18914). Lane 1: treated or Lane 2: untreated synchronized in metaphase by treatment with 0.4 ug/mL of nocodazole for 6 hr then metaphase cells were isolated by mitotic shake-off.

- Flow Cytometry

Flow cytometric analysis of HeLa cells with Histone H3 (phospho S28) monoclonal antibody, clone D6 (Cat # MAB18914). Secondary antibody only negative control (blue) or untreated (red) or treated with nocodazole (green).