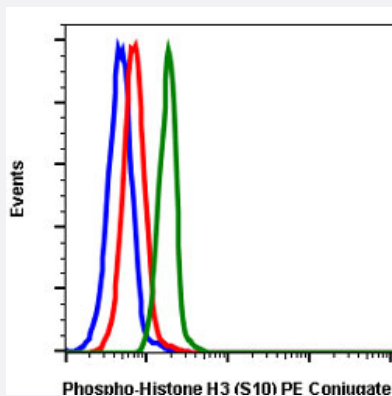


# Histone H3 (phospho S10) monoclonal antibody, clone 4B6 (PE)

Catalog # MAB18912      Size 10 Reactions

## Applications



### Flow Cytometry

Flow cytometric analysis of HeLa cells with Histone H3 (phospho S10) monoclonal antibody, clone 4B6 (PE) (Cat # MAB18912). Secondary antibody only negative control (blue) or untreated (red) or treated with nocodazole (green).

## Specification

<b>Product Description</b>	Rabbit monoclonal antibody raised against synthetic phosphopeptide of Histone H3.
<b>Immunogen</b>	A synthetic phosphopeptide corresponding to residues surrounding S10 of human Histone H3.
<b>Host</b>	Rabbit
<b>Reactivity</b>	Human
<b>Form</b>	Liquid
<b>Conjugation</b>	PE
<b>Purification</b>	Protein A/G purification
<b>Isotype</b>	IgG1, kappa
<b>Recommend Usage</b>	Flow Cytometry (5 $\mu$ L/ $10^6$ cells) The optimal working dilution should be determined by the end user.
<b>Storage Buffer</b>	In PBS, pH 7.4 (0.2% BSA, 0.09% sodium azide).

**Storage Instruction**

Store at 4°C.

**Note**

This product contains sodium azide: a POISONOUS AND HAZARDOUS SUBSTANCE which should be handled by trained staff only.

## Applications

- Flow Cytometry

Flow cytometric analysis of HeLa cells with Histone H3 (phospho S10) monoclonal antibody, clone 4B6 (PE) (Cat # MAB18912). Secondary antibody only negative control (blue) or untreated (red) or treated with nocodazole (green).