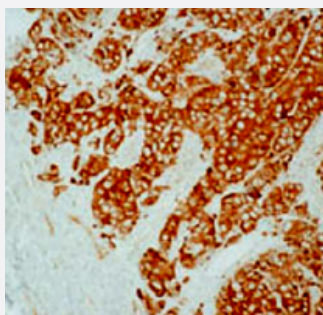


HSPB1 monoclonal antibody, clone G3.1

Catalog # MAB1889

Size 100 ug

Applications



Immunohistochemistry (Formalin/PFA-fixed paraffin-embedded sections)

Immunohistochemical staining using HSPB1 monoclonal antibody, clone G3.1 on formalin-fixed, paraffin-embedded human breast carcinoma with peroxidase-conjugate and DAB chromogen.

Specification

Product Description	Mouse monoclonal antibody raised against native HSPB1.
Immunogen	Native purified human HSPB1.
Host	Mouse
Reactivity	Human
Form	Liquid
Isotype	IgG1
Quality Control Testing	Antibody Reactive Against Native Purified Protein.
Recommend Usage	The optimal working dilution should be determined by the end user.
Storage Buffer	In PBS (0.08% sodium azide)
Storage Instruction	Store at -20°C. Aliquot to avoid repeated freezing and thawing.
Note	This product contains sodium azide: a POISONOUS AND HAZARDOUS SUBSTANCE which should be handled by trained staff only.

Applications

- Western Blot
- Immunohistochemistry (Formalin/PFA-fixed paraffin-embedded sections)

Immunohistochemical staining using HSPB1 monoclonal antibody, clone G3.1 on formalin-fixed, paraffin-embedded human breast carcinoma with peroxidase-conjugate and DAB chromogen.

- Immunohistochemistry (Frozen sections)
- Immunocytochemistry
- Immunoprecipitation
- Enzyme-linked Immunoabsorbent Assay

Gene Info — HSPB1

Entrez GeneID	3315
Gene Name	HSPB1
Gene Alias	CMT2F, DKFZp586P1322, HMN2B, HS.76067, HSP27, HSP28, Hsp25, SRP27
Gene Description	heat shock 27kDa protein 1
Omim ID	602195 606595 608634
Gene Ontology	Hyperlink
Gene Summary	The protein encoded by this gene is induced by environmental stress and developmental changes . The encoded protein is involved in stress resistance and actin organization and translocates from the cytoplasm to the nucleus upon stress induction. Defects in this gene are a cause of Charcot-Marie-Tooth disease type 2F (CMT2F) and distal hereditary motor neuropathy (dHMN). [provided by RefSeq]
Other Designations	OTTHUMP00000024846 estrogen-regulated 24 kDa protein heat shock 27kD protein 1 heat shock protein beta-1 stress-responsive protein 27

Publication Reference

- [Small heat shock protein 27 \(HSP27\) associates with tubulin/microtubules in HeLa cells.](#)

Hino M, Kurogi K, Okubo MA, Murata-Hori M, Hosoya H.

Biochemical and Biophysical Research Communications 2000 Apr; 271(1):164.

Application: IF, IP, WB, Human, HeLa cells, Recombinant protein

- [Immunological evidence for the identity between the hsp27 estrogen-regulated heat shock protein and the p29 estrogen receptor-associated protein in breast and endometrial cancer.](#)

Ciocca DR, Luque EH.

Breast Cancer Research and Treatment 1991 Dec; 20(1):33.

Application: IHC-P, IP, WB-Ce, WB-Ti, Human, Human breast cancer, Human endometrial cancer, MCF-7 cells

- [A cDNA for the estradiol-regulated 24K protein: control of mRNA levels in MCF-7 cells.](#)

Moretti-Rojas I, Fuqua SA, Montgomery RA 3rd, McGuire WL.

Breast Cancer Research and Treatment 1988 May; 11(2):155.

Application: IP, Human, Rabbit, MCF-7 cells, Rabbit reticulocytes

Pathway

- [MAPK signaling pathway](#)
- [VEGF signaling pathway](#)

Disease

- [Adenocarcinoma](#)
- [Carcinoma](#)
- [Charcot-Marie-Tooth Disease](#)
- [Diabetic Nephropathies](#)
- [Genetic Predisposition to Disease](#)
- [Lung Neoplasms](#)
- [Small Cell Lung Carcinoma](#)