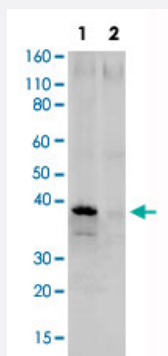


CRKL (phospho Y207) monoclonal antibody, clone G4

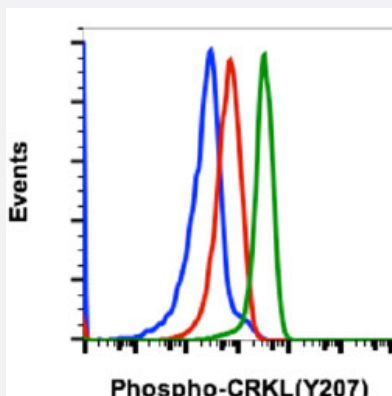
Catalog # MAB18880 Size 20 uL

Applications



Western Blot (Cell lysate)

Western Blot analysis of K562 cell lysate with CRKL (phospho Y207) monoclonal antibody, clone G4 (Cat # MAB18880). Lane 1: untreated or Lane 2: treated with imatinib.



Flow Cytometry

Flow cytometric analysis of K562 cells with CRKL (phospho Y207) monoclonal antibody, clone G4 (Cat # MAB18880). Secondary antibody only negative control (blue) or imatinib (red) or treated with pervanadate (green).

Specification

Product Description	Rabbit monoclonal antibody raised against synthetic phosphopeptide of human CRKL.
Immunogen	A synthetic phosphopeptide corresponding to residues surrounding Y207 of human CRKL.
Host	Rabbit
Reactivity	Human, Mouse
Form	Liquid
Purification	Protein A/G purification

Isotype	IgG1, kappa
Recommend Usage	Flow Cytometry Western Blot The optimal working dilution should be determined by the end user.
Storage Buffer	In PBS, pH 7.4 (50% glycerol, 0.1% BSA and 0.02% sodium azide).
Storage Instruction	Store at -20°C.
Note	This product contains sodium azide: a POISONOUS AND HAZARDOUS SUBSTANCE which should be handled by trained staff only.

Applications

- Western Blot (Cell lysate)

Western Blot analysis of K562 cell lysate with CRKL (phospho Y207) monoclonal antibody, clone G4 (Cat # MAB18880). Lane 1: untreated or Lane 2: treated with imatinib.

- Flow Cytometry

Flow cytometric analysis of K562 cells with CRKL (phospho Y207) monoclonal antibody, clone G4 (Cat # MAB18880). Secondary antibody only negative control (blue) or imatinib (red) or treated with pervanadate (green).

Gene Info — CRKL

Entrez GeneID	1399
Gene Name	CRKL
Gene Alias	-
Gene Description	v-crk sarcoma virus CT10 oncogene homolog (avian)-like
Omim ID	602007
Gene Ontology	Hyperlink
Gene Summary	This gene encodes a protein kinase containing SH2 and SH3 (src homology) domains which has been shown to activate the RAS and JUN kinase signaling pathways and transform fibroblasts in a RAS-dependent fashion. It is a substrate of the BCR-ABL tyrosine kinase, plays a role in fibroblast transformation by BCR-ABL, and may be oncogenic
Other Designations	v-crk avian sarcoma virus CT10 oncogene homolog-like

Pathway

- [Chemokine signaling pathway](#)
- [Chronic myeloid leukemia](#)
- [ErbB signaling pathway](#)
- [Fc gamma R-mediated phagocytosis](#)
- [Focal adhesion](#)
- [Insulin signaling pathway](#)
- [MAPK signaling pathway](#)
- [Neurotrophin signaling pathway](#)
- [Pathways in cancer](#)
- [Regulation of actin cytoskeleton](#)
- [Renal cell carcinoma](#)

Disease

- [Cardiovascular Diseases](#)
- [Diabetes Mellitus](#)
- [Edema](#)