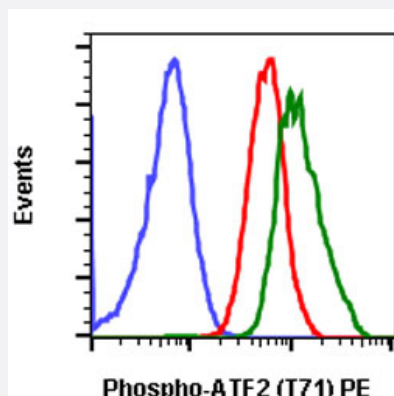


# ATF2 (phospho T71) monoclonal antibody, clone G3 (PE)

Catalog # MAB18804      Size 10 Reactions

## Applications



### Flow Cytometry

Flow cytometric analysis of Jurkat cells with ATF2 (phospho T71) monoclonal antibody, clone G3 (PE) (Cat # MAB18804). Secondary antibody only negative control (blue) or untreated (red) or treated with anisomycin (green).

## Specification

<b>Product Description</b>	Rabbit monoclonal antibody raised against synthetic phosphopeptide of human ATF2.
<b>Immunogen</b>	A synthetic phosphopeptide corresponding to residues surrounding T71 of human ATF2.
<b>Host</b>	Rabbit
<b>Reactivity</b>	Human, Mouse
<b>Form</b>	Liquid
<b>Conjugation</b>	PE
<b>Purification</b>	Protein A/G purification
<b>Isotype</b>	IgG1, kappa
<b>Recommend Usage</b>	Flow Cytometry (5 $\mu$ L/ $10^6$ cells) The optimal working dilution should be determined by the end user.
<b>Storage Buffer</b>	In PBS, pH 7.4 (0.2% BSA, 0.09% sodium azide).

## Storage Instruction

Store at 4°C.

## Note

This product contains sodium azide: a POISONOUS AND HAZARDOUS SUBSTANCE which should be handled by trained staff only.

## Applications

- Flow Cytometry

Flow cytometric analysis of Jurkat cells with ATF2 (phospho T71) monoclonal antibody, clone G3 (PE) (Cat # MAB18804).  
Secondary antibody only negative control (blue) or untreated (red) or treated with anisomycin (green).

## Gene Info — ATF2

## Entrez GeneID

[1386](#)

## Gene Name

ATF2

## Gene Alias

CRE-BP1, CREB2, HB16, MGC111558, TREB7

## Gene Description

activating transcription factor 2

## Omim ID

[123811](#)

## Gene Ontology

[Hyperlink](#)

## Gene Summary

This gene encodes a transcription factor that is a member of the leucine zipper family of DNA binding proteins. This protein binds to the cAMP-responsive element (CRE), an octameric palindrome. The protein forms a homodimer or heterodimer with c-Jun and stimulates CRE-dependent transcription. The protein is also a histone acetyltransferase (HAT) that specifically acetylates histones H2B and H4 in vitro; thus it may represent a class of sequence-specific factors that activate transcription by direct effects on chromatin components. Additional transcript variants have been identified but their biological validity has not been determined. [provided by RefSeq]

## Other Designations

OTTHUMP00000163262|activating transcription factor 2 splice variant ATF2-var2|cAMP responsive element binding protein 2, formerly

## Pathway

- [MAPK signaling pathway](#)

## Disease

- [Bipolar Disorder](#)
- [Cardiovascular Diseases](#)
- [Diabetes Mellitus](#)
- [Edema](#)
- [Genetic Predisposition to Disease](#)
- [Schizophrenia](#)
- [Tobacco Use Disorder](#)