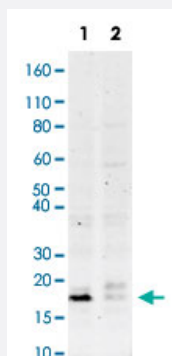


EIF4EBP1 (phospho T37/T46) monoclonal antibody, clone A5

Catalog # MAB18766

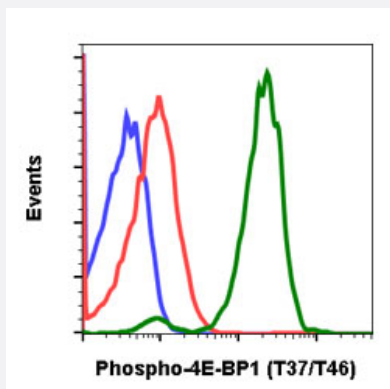
Size 20 uL

Applications



Western Blot (Cell lysate)

Western Blot analysis of K562 cell lysate with EIF4EBP1 (phospho T37/T46) monoclonal antibody, clone A5 (Cat # MAB18766). Lane 1: untreated or Lane 2: treated with imatinib.



Flow Cytometry

Flow cytometric analysis of C6 cells with EIF4EBP1 (phospho T37/T46) monoclonal antibody, clone A5 (Cat # MAB18766). Untreated cells stained with secondary antibody as negative control (blue) or untreated (red) or treated with UV and TPA (green).

Specification

Product Description	Rabbit monoclonal antibody raised against synthetic phosphopeptide of human EIF4EBP1.
Immunogen	A synthetic phosphopeptide corresponding to residues surrounding T37/T46 of human EIF4EBP1.
Host	Rabbit
Reactivity	Human, Mouse, Rat
Form	Liquid
Purification	Protein A/G purification

Isotype	IgG1, kappa
Recommend Usage	Flow Cytometry Immunohistochemistry (Formalin/PFA-fixed paraffin-embedded sections) Western Blot The optimal working dilution should be determined by the end user.
Storage Buffer	In PBS, pH 7.4 (50% glycerol, 0.1% BSA and 0.02% sodium azide).
Storage Instruction	Store at -20°C.
Note	This product contains sodium azide: a POISONOUS AND HAZARDOUS SUBSTANCE which should be handled by trained staff only.

Applications

- Western Blot (Cell lysate)

Western Blot analysis of K562 cell lysate with EIF4EBP1 (phospho T37/T46) monoclonal antibody, clone A5 (Cat # MAB18766).
Lane 1: untreated or Lane 2: treated with imatinib.

- Immunohistochemistry (Formalin/PFA-fixed paraffin-embedded sections)

- Flow Cytometry

Flow cytometric analysis of C6 cells with EIF4EBP1 (phospho T37/T46) monoclonal antibody, clone A5 (Cat # MAB18766).
Untreated cells stained with secondary antibody as negative control (blue) or untreated (red) or treated with UV and TPA (green).

Gene Info — EIF4EBP1

Entrez GeneID	1978
Gene Name	EIF4EBP1
Gene Alias	4E-BP1, 4EBP1, BP-1, MGC4316, PHAS-I
Gene Description	eukaryotic translation initiation factor 4E binding protein 1
Omim ID	602223
Gene Ontology	Hyperlink

Gene Summary

This gene encodes one member of a family of translation repressor proteins. The protein directly interacts with eukaryotic translation initiation factor 4E (eIF4E), which is a limiting component of the multisubunit complex that recruits 40S ribosomal subunits to the 5' end of mRNAs. Interaction of this protein with eIF4E inhibits complex assembly and represses translation. This protein is phosphorylated in response to various signals including UV irradiation and insulin signaling, resulting in its dissociation from eIF4E and activation of mRNA translation. [provided by RefSeq]

Other Designations

eIF4E-binding protein 1|phosphorylated heat- and acid-stable protein regulated by insulin 1

Pathway

- [Acute myeloid leukemia](#)
- [ErbB signaling pathway](#)
- [Insulin signaling pathway](#)
- [mTOR signaling pathway](#)

Disease

- [Alzheimer disease](#)
- [Genetic Predisposition to Disease](#)
- [Multiple System Atrophy](#)
- [Obesity](#)