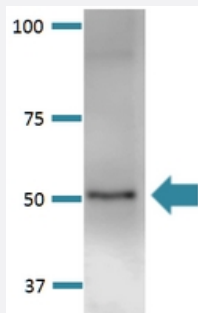


# Kcnk3 monoclonal antibody, clone S374-48 (ATTO 390)

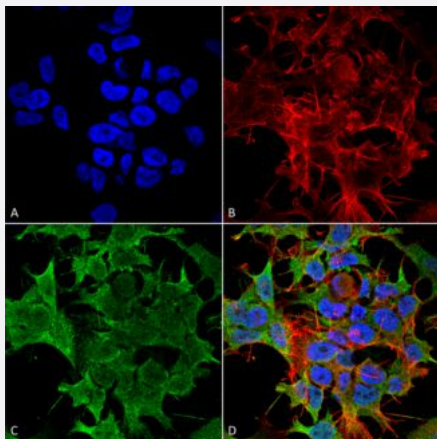
Catalog # MAB18691      Size 100 ug

## Applications



### Western Blot (Tissue lysate)

Western Blot analysis of rat brain membrane lysate with Kcnk3 monoclonal antibody, clone S374-48 (ATTO 390) (Cat # MAB18691).



### Immunocytochemistry

Immunocytochemical staining of SK-N-BE with Kcnk3 monoclonal antibody, clone S374-48 (ATTO 390) (Cat # MAB18691). (A) DAPI (blue) nuclear stain (B) Phalloidin Texas Red F-Actin stain (C) Kcnk3 Antibody and (D) Composite.

## Specification

<b>Product Description</b>	Mouse monoclonal antibody raised against partial recombinant rat Kcnk3.
<b>Immunogen</b>	Recombinant protein corresponding to amino acids 251-411 at C-terminus of rat Kcnk3.
<b>Host</b>	Mouse
<b>Reactivity</b>	Human, Rat
<b>Form</b>	Liquid

Conjugation	ATTO 390
Purification	Protein G Purified
Isotype	IgG2b
Recommend Usage	Immunocytochemistry (1:100) Immunofluorescence (1:100) Immunohistochemistry (Formalin/PFA-fixed paraffin-embedded sections) Western Blot (1:1000) The optimal working dilution should be determined by the end user.
Storage Buffer	In PBS, pH 7.4 (50% glycerol, 0.09% sodium azide).
Storage Instruction	Store at -20°C.
Note	This product contains sodium azide: a POISONOUS AND HAZARDOUS SUBSTANCE which should be handled by trained staff only.

## Applications

- Western Blot (Tissue lysate)

Western Blot analysis of rat brain membrane lysate with Kcnk3 monoclonal antibody, clone S374-48 (ATTO 390) (Cat # MAB18691).

- Immunohistochemistry (Formalin/PFA-fixed paraffin-embedded sections)

- Immunocytochemistry

Immunocytochemical staining of SK-N-BE with Kcnk3 monoclonal antibody, clone S374-48 (ATTO 390) (Cat # MAB18691). (A) DAPI (blue) nuclear stain (B) Phalloidin Texas Red F-Actin stain (C) Kcnk3 Antibody and (D) Composite.

- Immunofluorescence

## Gene Info — Kcnk3

Entrez GeneID	<a href="#">29553</a>
Protein Accession#	<a href="#">O54912</a>
Gene Name	Kcnk3
Gene Alias	Task-1, rTASK
Gene Description	potassium channel, subfamily K, member 3

**Gene Ontology**[Hyperlink](#)**Gene Summary**

subfamily K

**Other Designations**TWIK-related acid-sensitive K<sup>+</sup> channel