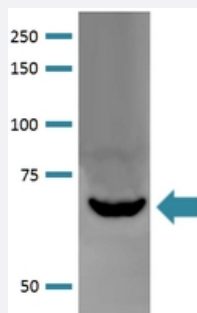


# Lgi1 monoclonal antibody, clone S283-7 (ATTO 488)

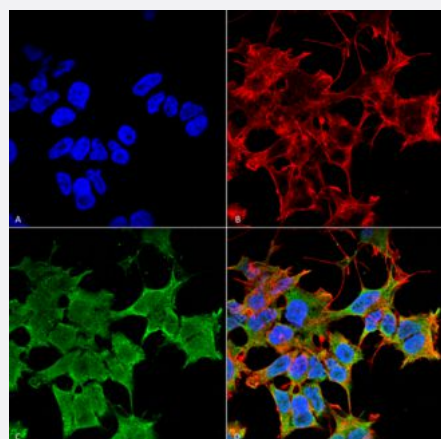
Catalog # MAB18613      Size 100 ug

## Applications



### Western Blot (Tissue lysate)

Western Blot analysis of rat brain membrane lysate with Lgi1 monoclonal antibody, clone S283-7 (ATTO 488) (Cat # MAB18613).



### Immunocytochemistry

Immunocytochemical staining of SK-N-BE with Lgi1 monoclonal antibody, clone S283-7 (ATTO 488) (Cat # MAB18613). (A) DAPI (blue) nuclear stain (B) Phalloidin Texas Red F-Actin stain (C) Lgi1 Antibody and (D) Composite.

## Specification

<b>Product Description</b>	Mouse monoclonal antibody raised against partial recombinant mouse Lgi1.
<b>Immunogen</b>	Recombinant protein corresponding to amino acids 37-113 at LRRNT domain and first LRR repeat of mouse Lgi1.
<b>Host</b>	Mouse
<b>Reactivity</b>	Human, Mouse, Rat
<b>Form</b>	Liquid

Conjugation	ATTO 488
Purification	Protein G Purified
Isotype	IgG2a
Recommend Usage	Immunocytochemistry Immunofluorescence Immunohistochemistry (Formalin/PFA-fixed paraffin-embedded sections) Western Blot (1:1000) The optimal working dilution should be determined by the end user.
Storage Buffer	In PBS, pH 7.4 (50% glycerol, 0.09% sodium azide).
Storage Instruction	Store at -20°C.
Note	This product contains sodium azide: a POISONOUS AND HAZARDOUS SUBSTANCE which should be handled by trained staff only.

## Applications

- Western Blot (Tissue lysate)

Western Blot analysis of rat brain membrane lysate with Lgi1 monoclonal antibody, clone S283-7 (ATTO 488) (Cat # MAB18613).

- Immunohistochemistry (Formalin/PFA-fixed paraffin-embedded sections)

- Immunocytochemistry

Immunocytochemical staining of SK-N-BE with Lgi1 monoclonal antibody, clone S283-7 (ATTO 488) (Cat # MAB18613). (A) DAPI (blue) nuclear stain (B) Phalloidin Texas Red F-Actin stain (C) Lgi1 Antibody and (D) Composite.

- Immunofluorescence

## Gene Info — Lgi1

Entrez GeneID	<a href="#">56839</a>
Protein Accession#	<a href="#">Q9JIA1-1</a>
Gene Name	Lgi1
Gene Alias	BB130740
Gene Description	leucine-rich repeat LGI family, member 1

**Gene Ontology**[Hyperlink](#)**Gene Summary**

O

**Other Designations**

OTTMUSP00000017555|leucine-rich, glioma inactivated 1