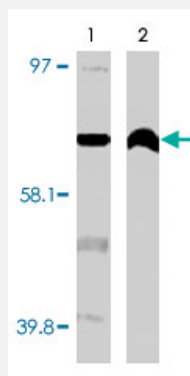


CYP4F11 monoclonal antibody, clone F21 P6 F5

Catalog # MAB1861

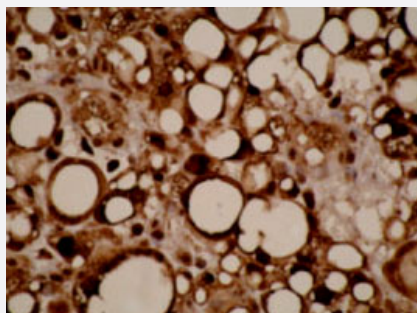
Size 200 ug

Applications



Western Blot (Tissue lysate)

Western blot using CYP4F11 monoclonal antibody, clone F21 P6 F5 (Cat # MAB1861) on normal (1) and cancerous (2) kidney cell lysates.



Immunohistochemistry (Formalin/PFA-fixed paraffin-embedded sections)

Immunohistochemical staining of human liposarcoma cells using CYP4F11 monoclonal antibody, clone F21 P6 F5 (Cat # MAB1861).

Specification

Product Description	Mouse monoclonal antibody raised against synthetic peptide of CYP4F11.
Immunogen	A synthetic peptide corresponding to C-terminus of human CYP4F11.
Host	Mouse
Reactivity	Human
Form	Liquid
Isotype	IgG1

Quality Control Testing	Antibody Reactive Against Synthetic Peptide.
Recommend Usage	Western Blot (1-2 ug/mL) Immunohistochemistry (Formalin/PFA-fixed paraffin-embedded sections) (1-5 ug/mL) The optimal working dilution should be determined by the end user.
Storage Buffer	In PBS (0.08% sodium azide)
Storage Instruction	Store at -20°C. Aliquot to avoid repeated freezing and thawing.
Note	This product contains sodium azide: a POISONOUS AND HAZARDOUS SUBSTANCE which should be handled by trained staff only.

Applications

- Western Blot (Tissue lysate)

Western blot using CYP4F11 monoclonal antibody, clone F21 P6 F5 (Cat # MAB1861) on normal (1) and cancerous (2) kidney cell lysates.

- Immunohistochemistry (Formalin/PFA-fixed paraffin-embedded sections)

Immunohistochemical staining of human liposarcoma cells using CYP4F11 monoclonal antibody, clone F21 P6 F5 (Cat # MAB1861).

- Enzyme-linked Immunoabsorbent Assay

Gene Info — CYP4F11

Entrez GeneID	57834
Gene Name	CYP4F11
Gene Alias	-
Gene Description	cytochrome P450, family 4, subfamily F, polypeptide 11
Gene Ontology	Hyperlink
Gene Summary	This gene, CYP4F11, encodes a member of the cytochrome P450 superfamily of enzymes. The cytochrome P450 proteins are monooxygenases which catalyze many reactions involved in drug metabolism and synthesis of cholesterol, steroids and other lipids. This gene is part of a cluster of cytochrome P450 genes on chromosome 19. Another member of this family, CYP4F2, is approximately 16 kb away. Alternatively spliced transcript variants encoding the same protein have been found for this gene. [provided by RefSeq]

Other Designations

cytochrome P450 family 4 subfamily F polypeptide 11|cytochrome P450, subfamily IVF, polypeptide 11

Publication Reference

- [Cytochrome p450 profile of colorectal cancer: identification of markers of prognosis.](#)

Kumarakulasingham M, Rooney PH, Dundas SR, Telfer C, Melvin WT, Curran S, Murray GI.

Clinical Cancer Research 2005 May; 11(10):3758.

Application: IHC, Human, Human colorectal cancer

- [Expression and characterization of human cytochrome P450 4F11: Putative role in the metabolism of therapeutic drugs and eicosanoids.](#)

Kalsotra A, Turman CM, Kikuta Y, Strobel HW.

Toxicology and Applied Pharmacology 2004 Sep; 199(3):295.

- [A novel human cytochrome P450 4F isoform \(CYP4F11\): cDNA cloning, expression, and genomic structural characterization.](#)

Cui X, Nelson DR, Strobel HW.

Genomics 2000 Sep; 68(2):161.

Disease

- [Genetic Predisposition to Disease](#)
- [Kidney Failure](#)
- [Lung Neoplasms](#)
- [Tobacco Use Disorder](#)