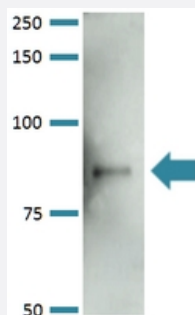


Mfn2 monoclonal antibody, clone S153-5 (ATTO 488)

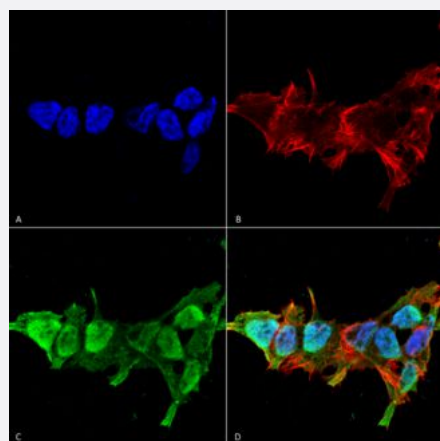
Catalog # MAB18601 Size 100 ug

Applications



Western Blot (Tissue lysate)

Western Blot analysis of rat brain membrane lysate with Mfn2 monoclonal antibody, clone S153-5 (ATTO 488) (Cat # MAB18601).



Immunocytochemistry

Immunocytochemical staining of SK-N-BE with Mfn2 monoclonal antibody, clone S153-5 (ATTO 488) (Cat # MAB18601). (A) DAPI (blue) nuclear stain (B) Phalloidin Texas Red F-Actin stain (C) Mfn2 Antibody and (D) Composite.

Specification

Product Description	Mouse monoclonal antibody raised against partial recombinant human Mfn2.
Immunogen	Recombinant protein corresponding to amino acids 370-600 at N-terminus of mouse Mfn2.
Host	Mouse
Reactivity	Human, Mouse, Rat
Form	Liquid

Conjugation	ATTO 488
Purification	Protein G Purified
Isotype	IgG2a
Recommend Usage	Immunocytochemistry (1:100) Immunofluorescence (1:100) Immunohistochemistry (Formalin/PFA-fixed paraffin-embedded sections) Western Blot (1:1000) The optimal working dilution should be determined by the end user.
Storage Buffer	In PBS, pH 7.4 (50% glycerol, 0.09% sodium azide).
Storage Instruction	Store at -20°C.
Note	This product contains sodium azide: a POISONOUS AND HAZARDOUS SUBSTANCE which should be handled by trained staff only.

Applications

- Western Blot (Tissue lysate)

Western Blot analysis of rat brain membrane lysate with Mfn2 monoclonal antibody, clone S153-5 (ATTO 488) (Cat # MAB18601).

- Immunohistochemistry (Formalin/PFA-fixed paraffin-embedded sections)

- Immunocytochemistry

Immunocytochemical staining of SK-N-BE with Mfn2 monoclonal antibody, clone S153-5 (ATTO 488) (Cat # MAB18601). (A) DAPI (blue) nuclear stain (B) Phalloidin Texas Red F-Actin stain (C) Mfn2 Antibody and (D) Composite.

- Immunofluorescence

Gene Info — Mfn2

Entrez GeneID	170731
Protein Accession#	Q80U63
Gene Name	Mfn2
Gene Alias	D630023P19Rik, Fzo
Gene Description	mitofusin 2

Gene Ontology[Hyperlink](#)**Other Designations**

OTTMUSP00000011416|OTTMUSP00000011417|OTTMUSP00000011419|hypertension related protein 1