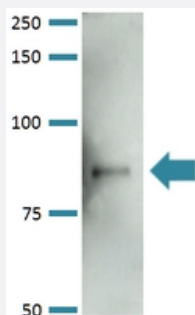


# Mfn2 monoclonal antibody, clone S153-5 (ATTO 390)

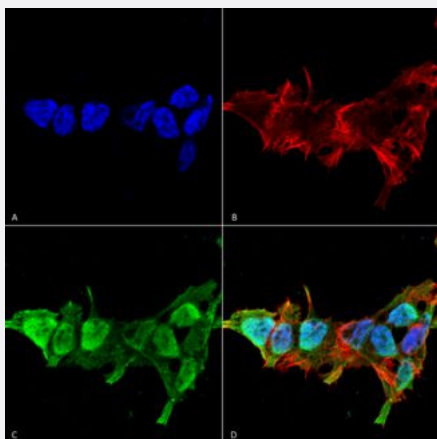
Catalog # MAB18600      Size 100 ug

## Applications



### Western Blot (Tissue lysate)

Western Blot analysis of rat brain membrane lysate with Mfn2 monoclonal antibody, clone S153-5 (ATTO 390) (Cat # MAB18600).



### Immunocytochemistry

Immunocytochemical staining of SK-N-BE with Mfn2 monoclonal antibody, clone S153-5 (ATTO 390) (Cat # MAB18600). (A) DAPI (blue) nuclear stain (B) Phalloidin Texas Red F-Actin stain (C) Mfn2 Antibody and (D) Composite.

## Specification

<b>Product Description</b>	Mouse monoclonal antibody raised against partial recombinant human Mfn2.
<b>Immunogen</b>	Recombinant protein corresponding to amino acids 370-600 at N-terminus of mouse Mfn2.
<b>Host</b>	Mouse
<b>Reactivity</b>	Human, Mouse, Rat
<b>Form</b>	Liquid

Conjugation	ATTO 390
Purification	Protein G Purified
Isotype	IgG2a
Recommend Usage	Immunocytochemistry (1:100) Immunofluorescence (1:100) Immunohistochemistry (Formalin/PFA-fixed paraffin-embedded sections) Western Blot (1:1000) The optimal working dilution should be determined by the end user.
Storage Buffer	In PBS, pH 7.4 (50% glycerol, 0.09% sodium azide).
Storage Instruction	Store at -20°C.
Note	This product contains sodium azide: a POISONOUS AND HAZARDOUS SUBSTANCE which should be handled by trained staff only.

## Applications

- Western Blot (Tissue lysate)

Western Blot analysis of rat brain membrane lysate with Mfn2 monoclonal antibody, clone S153-5 (ATTO 390) (Cat # MAB18600).

- Immunohistochemistry (Formalin/PFA-fixed paraffin-embedded sections)

- Immunocytochemistry

Immunocytochemical staining of SK-N-BE with Mfn2 monoclonal antibody, clone S153-5 (ATTO 390) (Cat # MAB18600). (A) DAPI (blue) nuclear stain (B) Phalloidin Texas Red F-Actin stain (C) Mfn2 Antibody and (D) Composite.

- Immunofluorescence

## Gene Info — Mfn2

Entrez GeneID	<a href="#">170731</a>
Protein Accession#	<a href="#">Q80U63</a>
Gene Name	Mfn2
Gene Alias	D630023P19Rik, Fzo
Gene Description	mitofusin 2

**Gene Ontology**[Hyperlink](#)**Other Designations**

OTTMUSP00000011416|OTTMUSP00000011417|OTTMUSP00000011419|hypertension related protein 1