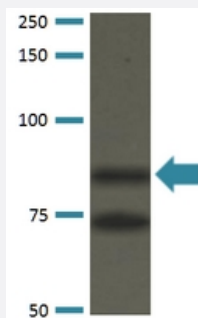


# Atxn1 monoclonal antibody, clone S76-8 (ATTO 594)

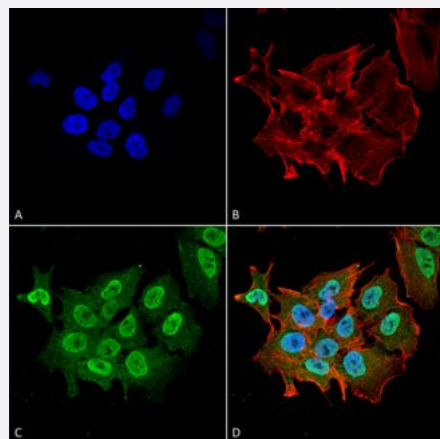
Catalog # MAB18591      Size 100 ug

## Applications



### Western Blot (Transfected lysate)

Western Blot analysis of COS-1 cells transfected with Atxn1 protein using Atxn1 monoclonal antibody, clone S76-8 (ATTO 594) (Cat # MAB18591).



### Immunocytochemistry

Immunocytochemical staining of SK-N-BE with Atxn1 monoclonal antibody, clone S76-8 (ATTO 594) (Cat # MAB18591). (A) DAPI (blue) nuclear stain (B) Phalloidin Texas Red F-Actin stain (C) Atxn1 Antibody and (D) Composite.

## Specification

<b>Product Description</b>	Mouse monoclonal antibody raised against synthetic peptide of mouse Atxn1.
<b>Immunogen</b>	A synthetic peptide corresponding to amino acids 164-197 of mouse Atxn1.
<b>Host</b>	Mouse
<b>Reactivity</b>	Human, Mouse
<b>Form</b>	Liquid

Conjugation	ATTO 594
Purification	Protein G Purified
Isotype	IgG2b
Recommend Usage	Immunocytochemistry (1:100) Immunofluorescence (1:100) Immunohistochemistry (Formalin/PFA-fixed paraffin-embedded sections) Immunoprecipitation Western Blot (1:1000) The optimal working dilution should be determined by the end user.
Storage Buffer	In PBS, pH 7.4 (50% glycerol, 0.09% sodium azide).
Storage Instruction	Store at -20°C.
Note	This product contains sodium azide: a POISONOUS AND HAZARDOUS SUBSTANCE which should be handled by trained staff only.

## Applications

- Western Blot (Transfected lysate)

Western Blot analysis of COS-1 cells transfected with Atxn1 protein using Atxn1 monoclonal antibody, clone S76-8 (ATTO 594) (Cat # MAB18591).

- Immunohistochemistry (Formalin/PFA-fixed paraffin-embedded sections)

- Immunocytochemistry

Immunocytochemical staining of SK-N-BE with Atxn1 monoclonal antibody, clone S76-8 (ATTO 594) (Cat # MAB18591). (A) DAPI (blue) nuclear stain (B) Phalloidin Texas Red F-Actin stain (C) Atxn1 Antibody and (D) Composite.

- Immunofluorescence

- Immunoprecipitation

## Gene Info — Atxn1

Entrez GeneID	<a href="#">20238</a>
Protein Accession#	<a href="#">P54254</a>
Gene Name	Atxn1

<b>Gene Alias</b>	Ataxin-1, Atx1, C85907, Sca1
<b>Gene Description</b>	ataxin 1
<b>Gene Ontology</b>	<a href="#">Hyperlink</a>
<b>Other Designations</b>	spinocerebellar ataxia 1 homolog