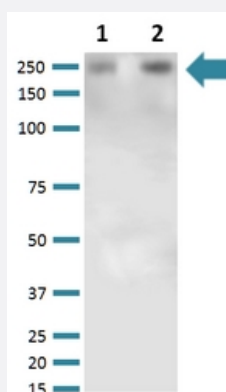


Vcan monoclonal antibody, clone S351-23 (A488)

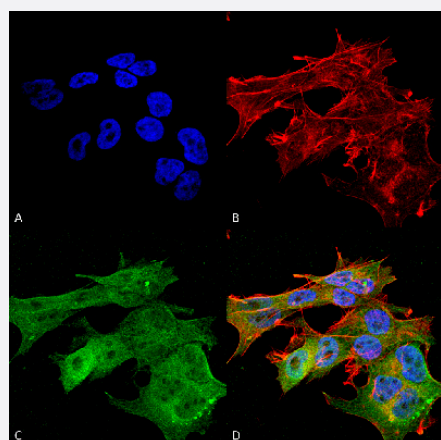
Catalog # MAB18506 Size 100 ug

Applications



Western Blot (Tissue lysate)

Western Blot analysis of rat brain membrane lysate with Vcan monoclonal antibody, clone S351-23 (A488) (Cat # MAB18506).



Immunocytochemistry

Immunocytochemical staining of SK-N-BE with Vcan monoclonal antibody, clone S351-23 (A488) (Cat # MAB18506). (A) DAPI (blue) nuclear stain (B) Phalloidin Texas Red F-Actin stain (C) Vcan Antibody and (D) Composite.

Specification

Product Description	Mouse monoclonal antibody raised against partial recombinant mouse Vcan.
Immunogen	Recombinant protein corresponding to amino acids 362-585 at glycosaminoglycan alpha domain of mouse Vcan core protein.
Host	Mouse
Reactivity	Human, Mouse, Rat

Form	Liquid
Conjugation	A488
Purification	Protein G purification
Isotype	IgG1
Recommend Usage	Immunocytochemistry (1:100) Immunofluorescence (1:100) Western Blot (1:1000) The optimal working dilution should be determined by the end user.
Storage Buffer	In PBS, pH 7.4 (50% glycerol, 0.09% sodium azide).
Storage Instruction	Store at -20°C.
Note	This product contains sodium azide: a POISONOUS AND HAZARDOUS SUBSTANCE which should be handled by trained staff only.

Applications

- Western Blot (Tissue lysate)

Western Blot analysis of rat brain membrane lysate with Vcan monoclonal antibody, clone S351-23 (A488) (Cat # MAB18506).

- Immunocytochemistry

Immunocytochemical staining of SK-N-BE with Vcan monoclonal antibody, clone S351-23 (A488) (Cat # MAB18506). (A) DAPI (blue) nuclear stain (B) Phalloidin Texas Red F-Actin stain (C) Vcan Antibody and (D) Composite.

- Immunofluorescence

Gene Info — Vcan

Entrez GeneID	13003
Protein Accession#	Q62059
Gene Name	Vcan
Gene Alias	5430420N07Rik, 9430051N09, Cspg2, DPEAAE, NG2, PG-M, PG-M(V0), PG-M(V1), hdf
Gene Description	versican
Gene Ontology	Hyperlink

Other Designations

PG-M core protein|Versican core protein precursor (Large fibroblast proteoglycan) (Chondroitin sulfate proteoglycan core protein 2) (PG-M)|chondroitin sulfate proteoglycan 2|heart defect
