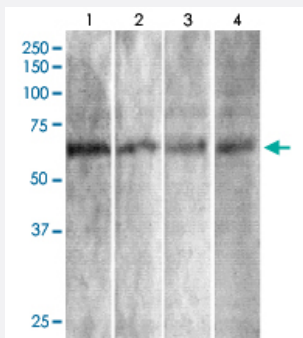


Syt7 monoclonal antibody, clone S275-14 (RPE)

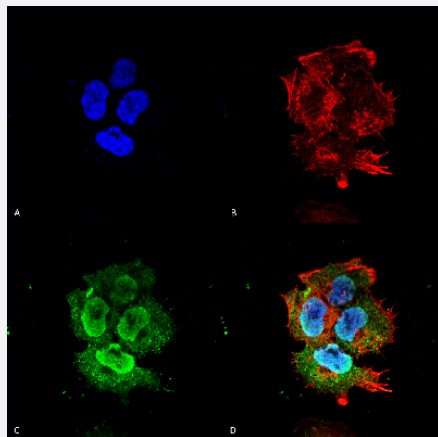
Catalog # MAB18398 Size 100 ug

Applications



Western Blot (Tissue lysate)

Western Blot analysis of rat brain tissue lysate with Syt7 monoclonal antibody, clone S275-14 (RPE) (Cat # MAB18398).



Immunocytochemistry

Immunocytochemical staining of SK-N-BE with Syt7 monoclonal antibody, clone S275-14 (RPE) (Cat # MAB18398). (A) DAPI (blue) nuclear stain (B) Phalloidin Texas Red F-Actin stain (C) Syt7 Antibody and (D) Composite.

Specification

Product Description	Mouse monoclonal antibody raised against partial recombinant mouse Syt7.
Immunogen	Recombinant protein corresponding to amino acids 150-239 at cytoplasmic C2A domain of mouse Syt7.
Host	Mouse
Reactivity	Human, Mouse, Rat
Form	Liquid

Conjugation	RPE
Purification	Protein G purification
Isotype	IgG2b
Recommend Usage	Immunocytochemistry (1:100) Immunofluorescence (1:100) Immunohistochemistry (Formalin/PFA-fixed paraffin-embedded sections) Western Blot (1:1000) The optimal working dilution should be determined by the end user.
Storage Buffer	In PBS, pH 7.4 (50% glycerol, 0.09% sodium azide).
Storage Instruction	Store at -20°C.
Note	This product contains sodium azide: a POISONOUS AND HAZARDOUS SUBSTANCE which should be handled by trained staff only.

Applications

- Western Blot (Tissue lysate)

Western Blot analysis of rat brain tissue lysate with Syt7 monoclonal antibody, clone S275-14 (RPE) (Cat # MAB18398).

- Immunohistochemistry (Formalin/PFA-fixed paraffin-embedded sections)

- Immunocytochemistry

Immunocytochemical staining of SK-N-BE with Syt7 monoclonal antibody, clone S275-14 (RPE) (Cat # MAB18398). (A) DAPI (blue) nuclear stain (B) Phalloidin Texas Red F-Actin stain (C) Syt7 Antibody and (D) Composite.

- Immunofluorescence

Gene Info — Syt7

Entrez GeneID	54525
Protein Accession#	Q9R0N7
Gene Name	Syt7
Gene Alias	AI851541, B230112P13Rik
Gene Description	synaptotagmin VII

Gene Ontology[Hyperlink](#)**Other Designations**

synaptotagmin 7