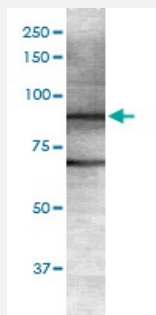


# Git1 monoclonal antibody, clone S39B-8 (RPE)

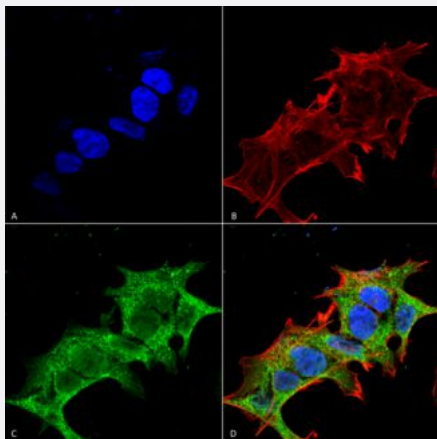
Catalog # MAB18357      Size 100 ug

## Applications



### Western Blot (Tissue lysate)

Western Blot analysis of rat brain membrane lysate with Git1 monoclonal antibody, clone S39B-8 (RPE) (Cat # MAB18357).



### Immunocytochemistry

Immunocytochemical staining of SK-N-BE with Git1 monoclonal antibody, clone S39B-8 (RPE) (Cat # MAB18357). (A) DAPI (blue) nuclear stain (B) Phalloidin Texas Red F-Actin stain (C) Git1 Antibody and (D) Composite.

## Specification

<b>Product Description</b>	Mouse monoclonal antibody raised against partial recombinant rat Git1.
<b>Immunogen</b>	Recombinant protein corresponding to amino acids 375-770 at C-terminus of rat Git1.
<b>Host</b>	Mouse
<b>Reactivity</b>	Rat
<b>Form</b>	Liquid

Conjugation	RPE
Purification	Protein G Purification
Isotype	IgG1
Recommend Usage	Immunocytochemistry Immunofluorescence Immunoprecipitation Western Blot (1:1000) The optimal working dilution should be determined by the end user.
Storage Buffer	In PBS, pH 7.4 (50% glycerol, 0.09% sodium azide).
Storage Instruction	Store at -20°C.
Note	This product contains sodium azide: a POISONOUS AND HAZARDOUS SUBSTANCE which should be handled by trained staff only.

## Applications

- Western Blot (Tissue lysate)

Western Blot analysis of rat brain membrane lysate with Git1 monoclonal antibody, clone S39B-8 (RPE) (Cat # MAB18357).

- Immunocytochemistry

Immunocytochemical staining of SK-N-BE with Git1 monoclonal antibody, clone S39B-8 (RPE) (Cat # MAB18357). (A) DAPI (blue) nuclear stain (B) Phalloidin Texas Red F-Actin stain (C) Git1 Antibody and (D) Composite.

- Immunofluorescence

- Immunoprecipitation

## Gene Info — Git1

Entrez GeneID	<a href="#">83709</a>
Protein Accession#	<a href="#">Q9Z272</a>
Gene Name	Git1
Gene Alias	-
Gene Description	G protein-coupled receptor kinase interacting ArfGAP 1

## Gene Ontology

[Hyperlink](#)

## Other Designations

G protein-coupled receptor kinase interactor 1|G protein-coupled receptor kinase-associated AD  
P ribosylation factor GTPase-activating protein (GIT1)|G protein-coupled receptor kinase-interact  
or 1