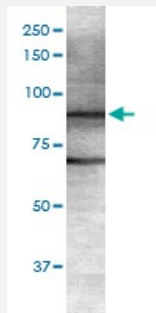


Git1 monoclonal antibody, clone S39B-8 (PerCP)

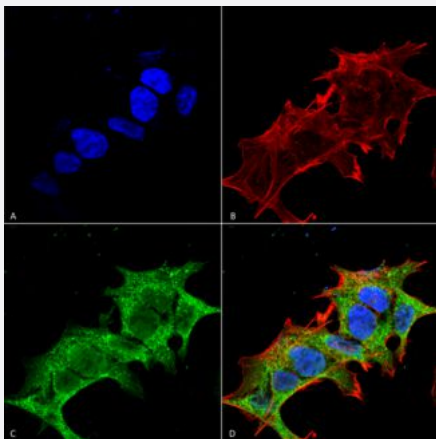
Catalog # MAB18356 Size 100 ug

Applications



Western Blot (Tissue lysate)

Western Blot analysis of rat brain membrane lysate with Git1 monoclonal antibody, clone S39B-8 (PerCP) (Cat # MAB18356).



Immunocytochemistry

Immunocytochemical staining of SK-N-BE with Git1 monoclonal antibody, clone S39B-8 (PerCP) (Cat # MAB18356). (A) DAPI (blue) nuclear stain (B) Phalloidin Texas Red F-Actin stain (C) Git1 Antibody and (D) Composite.

Specification

| | |
|----------------------------|---|
| Product Description | Mouse monoclonal antibody raised against partial recombinant rat Git1. |
| Immunogen | Recombinant protein corresponding to amino acids 375-770 at C-terminus of rat Git1. |
| Host | Mouse |
| Reactivity | Rat |
| Form | Liquid |

| | |
|---------------------|---|
| Conjugation | PerCP |
| Purification | Protein G Purification |
| Isotype | IgG1 |
| Recommend Usage | Immunocytochemistry Immunofluorescence Immunoprecipitation Western Blot (1:1000) The optimal working dilution should be determined by the end user. |
| Storage Buffer | In PBS, pH 7.4 (50% glycerol, 0.09% sodium azide). |
| Storage Instruction | Store at -20°C. |
| Note | This product contains sodium azide: a POISONOUS AND HAZARDOUS SUBSTANCE which should be handled by trained staff only. |

Applications

- Western Blot (Tissue lysate)

Western Blot analysis of rat brain membrane lysate with Git1 monoclonal antibody, clone S39B-8 (PerCP) (Cat # MAB18356).

- Immunocytochemistry

Immunocytochemical staining of SK-N-BE with Git1 monoclonal antibody, clone S39B-8 (PerCP) (Cat # MAB18356). (A) DAPI (blue) nuclear stain (B) Phalloidin Texas Red F-Actin stain (C) Git1 Antibody and (D) Composite.

- Immunofluorescence

- Immunoprecipitation

Gene Info — Git1

| | |
|--------------------|--|
| Entrez GeneID | 83709 |
| Protein Accession# | Q9Z272 |
| Gene Name | Git1 |
| Gene Alias | - |
| Gene Description | G protein-coupled receptor kinase interacting ArfGAP 1 |

Gene Ontology[Hyperlink](#)**Other Designations**

G protein-coupled receptor kinase interactor 1|G protein-coupled receptor kinase-associated AD
P ribosylation factor GTPase-activating protein (GIT1)|G protein-coupled receptor kinase-interact
or 1