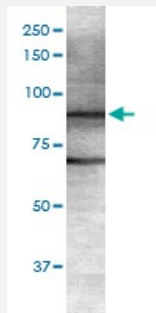


Git1 monoclonal antibody, clone S39B-8 (ATTO 390)

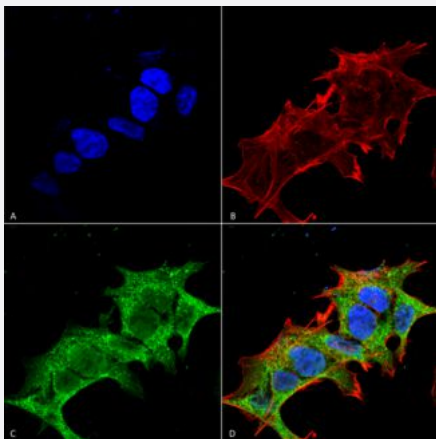
Catalog # MAB18346 Size 100 ug

Applications



Western Blot (Tissue lysate)

Western Blot analysis of rat brain membrane lysate with Git1 monoclonal antibody, clone S39B-8 (ATTO 390) (Cat # MAB18346).



Immunocytochemistry

Immunocytochemical staining of SK-N-BE with Git1 monoclonal antibody, clone S39B-8 (ATTO 390) (Cat # MAB18346). (A) DAPI (blue) nuclear stain (B) Phalloidin Texas Red F-Actin stain (C) Git1 Antibody and (D) Composite.

Specification

Product Description	Mouse monoclonal antibody raised against partial recombinant rat Git1.
Immunogen	Recombinant protein corresponding to amino acids 375-770 at C-terminus of rat Git1.
Host	Mouse
Reactivity	Rat
Form	Liquid

Conjugation	ATTO 390
Purification	Protein G Purification
Isotype	IgG1
Recommend Usage	Immunocytochemistry Immunofluorescence Immunoprecipitation Western Blot (1:1000) The optimal working dilution should be determined by the end user.
Storage Buffer	In PBS, pH 7.4 (50% glycerol, 0.09% sodium azide).
Storage Instruction	Store at -20°C.
Note	This product contains sodium azide: a POISONOUS AND HAZARDOUS SUBSTANCE which should be handled by trained staff only.

Applications

- Western Blot (Tissue lysate)

Western Blot analysis of rat brain membrane lysate with Git1 monoclonal antibody, clone S39B-8 (ATTO 390) (Cat # MAB18346).

- Immunocytochemistry

Immunocytochemical staining of SK-N-BE with Git1 monoclonal antibody, clone S39B-8 (ATTO 390) (Cat # MAB18346). (A) DAPI (blue) nuclear stain (B) Phalloidin Texas Red F-Actin stain (C) Git1 Antibody and (D) Composite.

- Immunofluorescence

- Immunoprecipitation

Gene Info — Git1

Entrez GeneID	83709
Protein Accession#	Q9Z272
Gene Name	Git1
Gene Alias	-
Gene Description	G protein-coupled receptor kinase interacting ArfGAP 1

Gene Ontology[Hyperlink](#)**Other Designations**

G protein-coupled receptor kinase interactor 1|G protein-coupled receptor kinase-associated AD
P ribosylation factor GTPase-activating protein (GIT1)|G protein-coupled receptor kinase-interact
or 1