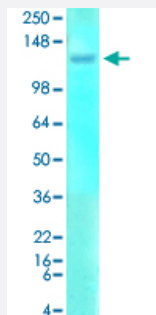


# Grm1/Grm5 monoclonal antibody, clone S75-33 (ATTO 488)

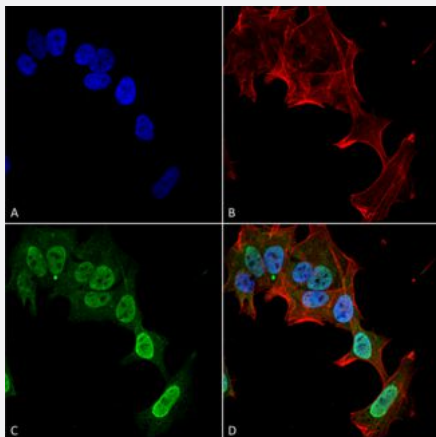
Catalog # MAB18299      Size 100 ug

## Applications



### Western Blot (Tissue lysate)

Western Blot analysis of rat brain membrane lysate with Grm1/Grm5 monoclonal antibody, clone S75-33 (ATTO 488) (Cat # MAB18299).



### Immunocytochemistry

Immunocytochemical staining of SK-N-BE with Grm1/Grm5 monoclonal antibody, clone S75-33 (ATTO 488) (Cat # MAB18299). (A) DAPI (blue) nuclear stain (B) Phalloidin Texas Red F-Actin stain (C) Grm1/Grm5 Antibody and (D) Composite.

## Specification

<b>Product Description</b>	Mouse monoclonal antibody raised against partial recombinant rat Grm1/Grm5.
<b>Immunogen</b>	Recombinant protein corresponding to amino acids 824-1203 at C-terminus of rat Grm5
<b>Host</b>	Mouse
<b>Reactivity</b>	Rat
<b>Form</b>	Liquid

Conjugation	ATTO 488
Purification	Protein G Purification
Isotype	IgG1
Recommend Usage	Immunocytochemistry (1:100) Immunofluorescence (1:100) Immunohistochemistry (Formalin/PFA-fixed paraffin-embedded sections) (1:1000) Immunoprecipitation Western Blot (1:1000) The optimal working dilution should be determined by the end user.
Storage Buffer	In PBS, pH 7.4 (50% glycerol, 0.09% sodium azide).
Storage Instruction	Store at -20°C.
Note	This product contains sodium azide: a POISONOUS AND HAZARDOUS SUBSTANCE which should be handled by trained staff only.

## Applications

- Western Blot (Tissue lysate)

Western Blot analysis of rat brain membrane lysate with Grm1/Grm5 monoclonal antibody, clone S75-33 (ATTO 488) (Cat # MAB18299).

- Immunohistochemistry (Formalin/PFA-fixed paraffin-embedded sections)

- Immunocytochemistry

Immunocytochemical staining of SK-N-BE with Grm1/Grm5 monoclonal antibody, clone S75-33 (ATTO 488) (Cat # MAB18299). (A) DAPI (blue) nuclear stain (B) Phalloidin Texas Red F-Actin stain (C) Grm1/Grm5 Antibody and (D) Composite.

- Immunofluorescence

- Immunoprecipitation

## Gene Info — Grm1

Entrez GeneID	<a href="#">24414</a>
Protein Accession#	<a href="#">P23385;P31424</a>
Gene Name	Grm1

Gene Alias	Gprc1a
Gene Description	glutamate receptor, metabotropic 1
Gene Ontology	<a href="#">Hyperlink</a>
Gene Summary	O
Other Designations	G protein coupled receptor family C group 1 member A

## Gene Info — Grm5

Entrez GeneID	<a href="#">24418</a>
Protein Accession#	<a href="#">P23385;P31424</a>
Gene Name	Grm5
Gene Alias	mGluR5, mGluR5
Gene Description	glutamate receptor, metabotropic 5
Gene Ontology	<a href="#">Hyperlink</a>
Gene Summary	O
Other Designations	metabotropic glutamate receptor (mGluR5) metabotropic glutamate receptor 5b