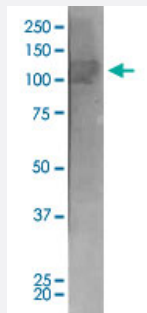


Gabbr2 monoclonal antibody, clone S81-2 (ATTO 390)

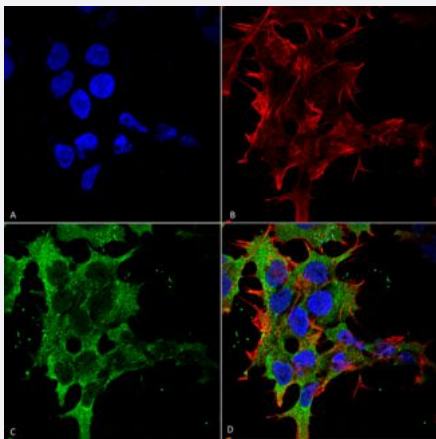
Catalog # MAB18265 Size 100 ug

Applications



Western Blot (Tissue lysate)

Western Blot analysis of rat brain membrane lysate with Gabbr2 monoclonal antibody, clone S81-2 (ATTO 390) (Cat # MAB18265).



Immunocytochemistry

Immunocytochemical staining of SK-N-BE with Gabbr2 monoclonal antibody, clone S81-2 (ATTO 390) (Cat # MAB18265). (A) DAPI (blue) nuclear stain (B) Phalloidin Texas Red F-Actin stain (C) Gabbr2 Antibody and (D) Composite.

Specification

Product Description	Mouse monoclonal antibody raised against partial recombinant rat Gabbr2.
Immunogen	Recombinant protein corresponding to amino acids 861-912 of rat Gabbr2.
Host	Mouse
Reactivity	Rat
Form	Liquid

Conjugation	ATTO 390
Purification	Protein G Purification
Isotype	IgG1
Recommend Usage	Immunocytochemistry Immunofluorescence Immunohistochemistry (Formalin/PFA-fixed paraffin-embedded sections) Western Blot (1:1000) The optimal working dilution should be determined by the end user.
Storage Buffer	In PBS, pH 7.4 (50% glycerol, 0.09% sodium azide).
Storage Instruction	Store at -20°C.
Note	This product contains sodium azide: a POISONOUS AND HAZARDOUS SUBSTANCE which should be handled by trained staff only.

Applications

- Western Blot (Tissue lysate)

Western Blot analysis of rat brain membrane lysate with Gabbr2 monoclonal antibody, clone S81-2 (ATTO 390) (Cat # MAB18265).

- Immunohistochemistry (Formalin/PFA-fixed paraffin-embedded sections)

- Immunocytochemistry

Immunocytochemical staining of SK-N-BE with Gabbr2 monoclonal antibody, clone S81-2 (ATTO 390) (Cat # MAB18265). (A) DAPI (blue) nuclear stain (B) Phalloidin Texas Red F-Actin stain (C) Gabbr2 Antibody and (D) Composite.

- Immunofluorescence

Gene Info — Gabbr2

Entrez GeneID	83633
Protein Accession#	Q88871
Gene Name	Gabbr2
Gene Alias	Gpr51
Gene Description	gamma-aminobutyric acid (GABA) B receptor 2

Gene Ontology[Hyperlink](#)**Other Designations**

G protein-coupled receptor 51|GABA-B R2 receptor