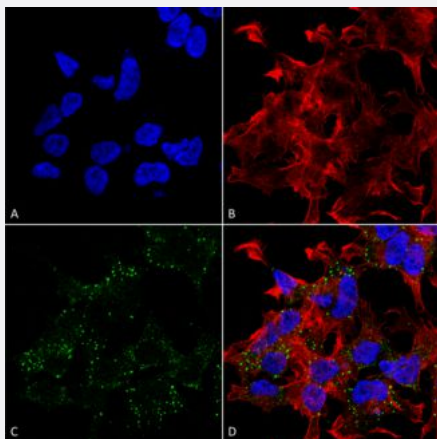


Slc17a8 monoclonal antibody, clone S34-34 (ATTO 390)

Catalog # MAB18230 Size 100 ug

Applications



Immunocytochemistry

Immunocytochemical staining of SK-N-BE with Slc17a8 monoclonal antibody, clone S34-34 (ATTO 390) (Cat # MAB18230). (A) DAPI (blue) nuclear stain (B) Phalloidin Texas Red F-Actin stain (C) Slc17a8 Antibody and (D) Composite.

Specification

Product Description	Mouse monoclonal antibody raised against partial recombinant rat Slc17a8.
Immunogen	Recombinant protein corresponding to amino acids 546-588 at C-terminus of rat Slc17a8.
Host	Mouse
Reactivity	Rat
Form	Liquid
Conjugation	ATTO 390
Purification	Protein G Purification
Isotype	IgG1

Recommend Usage	Immunocytochemistry (1:100) Immunofluorescence (1:100) Immunohistochemistry (Formalin/PFA-fixed paraffin-embedded sections) Western Blot (1:1000) The optimal working dilution should be determined by the end user.
Storage Buffer	In PBS, pH 7.4 (50% glycerol, 0.09% sodium azide).
Storage Instruction	Store at -20°C.
Note	This product contains sodium azide: a POISONOUS AND HAZARDOUS SUBSTANCE which should be handled by trained staff only.

Applications

- Western Blot (Tissue lysate)
- Immunohistochemistry (Formalin/PFA-fixed paraffin-embedded sections)
- Immunocytochemistry

Immunocytochemical staining of SK-N-BE with Slc17a8 monoclonal antibody, clone S34-34 (ATTO 390) (Cat # MAB18230). (A) DAPI (blue) nuclear stain (B) Phalloidin Texas Red F-Actin stain (C) Slc17a8 Antibody and (D) Composite.

- Immunofluorescence

Gene Info — Slc17a8

Entrez GeneID	266767
Protein Accession#	Q7TSF2
Gene Name	Slc17a8
Gene Alias	Vglut3
Gene Description	solute carrier family 17 (sodium-dependent inorganic phosphate cotransporter), member 8
Gene Ontology	Hyperlink
Gene Summary	O
Other Designations	vesicular glutamate transporter 3