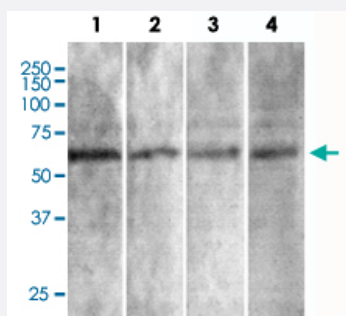


# Syt7 monoclonal antibody, clone S275-14 (ATTO 390)

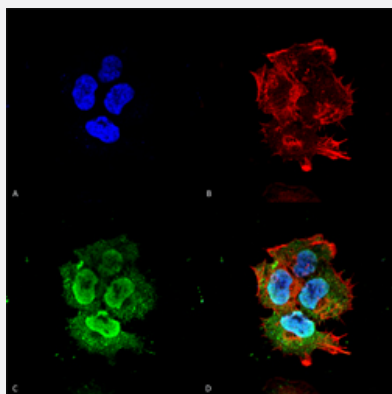
Catalog # MAB18223      Size 100 ug

## Applications



### Western Blot (Tissue lysate)

Western Blot analysis of rat brain lysate (1) 1:100, (2) 1:250, (3) 1:500 and (4) 1:1000 of Syt7 monoclonal antibody.



### Immunocytochemistry

Immunocytochemical staining of SK-N-BE cell line. (A) DAPI (blue) nuclear stain (B) Phalloidin Texas Red F-Actin stain (C) Syt7 Antibody and (D) Composite.

## Specification

<b>Product Description</b>	Mouse monoclonal antibody raised against partial recombinant mouse Syt7.
<b>Immunogen</b>	Recombinant protein corresponding to amino acids 150-239 at cytoplasmic C2A domain of mouse Syt7.
<b>Host</b>	Mouse
<b>Reactivity</b>	Human, Mouse, Rat
<b>Specificity</b>	It does not cross react with synaptotagmin-6 or others. Can identify other isoforms bands at ~ 65kD.

Form	Liquid
Conjugation	ATTO 390
Purification	Protein G purification
Isotype	IgG2b
Recommend Usage	Immunocytochemistry (1:100) Immunofluorescence (1:100) Immunohistochemistry (Formalin/PFA-fixed paraffin-embedded sections) Western Blot (1:1000) The optimal working dilution should be determined by the end user.
Storage Buffer	In PBS, pH 7.4 (50% glycerol, 0.09% sodium azide).
Storage Instruction	Store at -20°C.
Note	This product contains sodium azide: a POISONOUS AND HAZARDOUS SUBSTANCE which should be handled by trained staff only.

## Applications

- Western Blot (Tissue lysate)

Western Blot analysis of rat brain lysate (1) 1:100, (2) 1:250, (3) 1:500 and (4) 1:1000 of Syt7 monoclonal antibody.

- Immunohistochemistry (Formalin/PFA-fixed paraffin-embedded sections)

- Immunocytochemistry

Immunocytochemical staining of SK-N-BE cell line. (A) DAPI (blue) nuclear stain (B) Phalloidin Texas Red F-Actin stain (C) Syt7 Antibody and (D) Composite.

- Immunofluorescence

## Gene Info — Syt7

Entrez GeneID	<a href="#">54525</a>
Protein Accession#	<a href="#">Q9R0N7</a>
Gene Name	Syt7
Gene Alias	A1851541, B230112P13Rik

<b>Gene Description</b>	synaptotagmin VII
-------------------------	-------------------

<b>Gene Ontology</b>	<a href="#">Hyperlink</a>
----------------------	---------------------------

<b>Other Designations</b>	synaptotagmin 7
---------------------------	-----------------