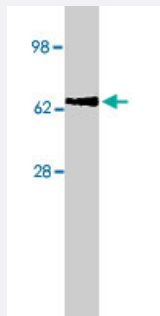


AFP monoclonal antibody, clone C3

Catalog # MAB1822 Size 100 ug

Applications



Western Blot (Cell lysate)

Western blot analysis of AFP expression in HepG2 cell lysate (10 ug/lane) with AFP monoclonal antibody, clone C3 (Cat # MAB1822) at 4 ug/mL .

Specification

Product Description	Mouse monoclonal antibody raised against AFP.
Immunogen	Human AFP.
Host	Mouse
Reactivity	Dog, Human, Pig
Form	Liquid
Isotype	IgG2a
Quality Control Testing	Antibody Reactive Against AFP.
Recommend Usage	The optimal working dilution should be determined by the end user.
Storage Buffer	In PBS (0.08% sodium azide)
Storage Instruction	Store at -20°C. Aliquot to avoid repeated freezing and thawing.
Note	This product contains sodium azide: a POISONOUS AND HAZARDOUS SUBSTANCE which should be handled by trained staff only.

Applications

- Western Blot (Cell lysate)

Western blot analysis of AFP expression in HepG2 cell lysate (10 ug/lane) with AFP monoclonal antibody, clone C3 (Cat # MAB1822) at 4 ug/mL .

- Immunohistochemistry

Gene Info — AFP

Entrez GeneID	174
---------------	---------------------

Gene Name	AFP
-----------	-----

Gene Alias	FETA, HPAFP
------------	-------------

Gene Description	alpha-fetoprotein
------------------	-------------------

Omim ID	104150
---------	------------------------

Gene Ontology	Hyperlink
---------------	---------------------------

Gene Summary	<p>This gene encodes alpha-fetoprotein, a major plasma protein produced by the yolk sac and the liver during fetal life. Alpha-fetoprotein expression in adults is often associated with hepatoma or teratoma. However, hereditary persistence of alpha-fetoprotein may also be found in individuals with no obvious pathology. The protein is thought to be the fetal counterpart of serum albumin, and the alpha-fetoprotein and albumin genes are present in tandem in the same transcriptional orientation on chromosome 4. Alpha-fetoprotein is found in monomeric as well as dimeric and trimeric forms, and binds copper, nickel, fatty acids and bilirubin. The level of alpha-fetoprotein in amniotic fluid is used to measure renal loss of protein to screen for spina bifida and anencephaly. [provided by RefSeq]</p>
--------------	--

Other Designations	OTTHUMP00000160480 alpha-1-fetoprotein alpha-fetoglobulin
--------------------	---

Publication Reference

- [Human mesenchymal stem cells xenografted directly to rat liver are differentiated into human hepatocytes without fusion.](#)

Sato Y, Araki H, Kato J, Nakamura K, Kawano Y, Kobune M, Sato T, Miyanishi K, Takayama T, Takahashi M, Takimoto R, Iyama S, Matsunaga T, Ohtani S, Matsuura A, Hamada H, Niitsu Y.

Blood 2005 Jul; 106(2):756.

Application: IF, IHC, Human, Rat, Liver, hMSCs

- [Human alpha-fetoprotein epitopes as revealed by monoclonal antibodies.](#)

Yazova AK, Goussev AI, Poltoranina VS, Yakimenko EF.

Immunology Letters 1990 Sep; 25(4):325.

Application: ELISA, Human, Recombinant proteins

Disease

- [Carcinoma](#)
- [Liver Cirrhosis](#)
- [Liver Neoplasms](#)