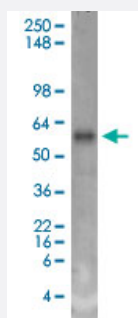


SLC18A3 monoclonal antibody, clone S6-38 (ATTO 390)

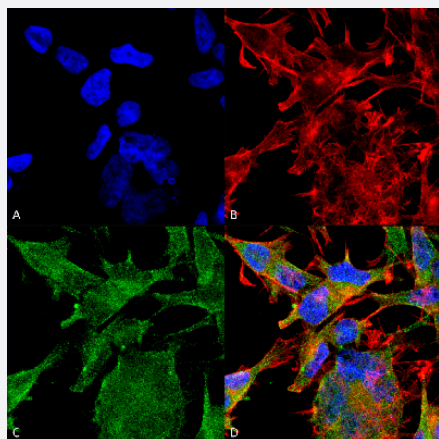
Catalog # MAB18189 Size 100 ug

Applications



Western Blot (Tissue lysate)

Western Blot analysis of rat brain membrane lysate with SLC18A3 monoclonal antibody, clone S6-38 (ATTO 390) (Cat # MAB18189).



Immunocytochemistry

Immunocytochemical staining of SK-N-BE with SLC18A3 monoclonal antibody, clone S6-38 (ATTO 390) (Cat # MAB18189). (A) DAPI (blue) nuclear stain (B) Phalloidin Texas Red F-Actin stain (C) SLC18A3 Antibody and (D) Composite.

Specification

| | |
|----------------------------|--|
| Product Description | Mouse monoclonal antibody raised against synthetic peptide of human SLC18A3. |
| Immunogen | A synthetic peptide corresponding to amino acids 521-532 of human SLC18A3. |
| Host | Mouse |
| Reactivity | Human, Rat |
| Form | Liquid |

| | |
|---------------------|--|
| Conjugation | ATTO 390 |
| Purification | Protein G purification |
| Isotype | IgG1 |
| Recommend Usage | Immunocytochemistry (1:100) Immunofluorescence (1:100) Immunohistochemistry (Formalin/PFA-fixed paraffin-embedded sections) (1:200) Western Blot (1:1000) The optimal working dilution should be determined by the end user. |
| Storage Buffer | In PBS, pH 7.4 (50% glycerol, 0.09% sodium azide). |
| Storage Instruction | Store at -20°C. |
| Note | This product contains sodium azide: a POISONOUS AND HAZARDOUS SUBSTANCE which should be handled by trained staff only. |

Applications

- Western Blot (Tissue lysate)

Western Blot analysis of rat brain membrane lysate with SLC18A3 monoclonal antibody, clone S6-38 (ATTO 390) (Cat # MAB18189).

- Immunohistochemistry (Formalin/PFA-fixed paraffin-embedded sections)

- Immunocytochemistry

Immunocytochemical staining of SK-N-BE with SLC18A3 monoclonal antibody, clone S6-38 (ATTO 390) (Cat # MAB18189).
(A) DAPI (blue) nuclear stain (B) Phalloidin Texas Red F-Actin stain (C) SLC18A3 Antibody and (D) Composite.

- Immunofluorescence

Gene Info — SLC18A3

| | |
|--------------------|--|
| Entrez GeneID | 6572 |
| Protein Accession# | Q16572 |
| Gene Name | SLC18A3 |
| Gene Alias | MGC12716, VACHT |
| Gene Description | solute carrier family 18 (vesicular acetylcholine), member 3 |

Omim ID [600336](#)

Gene Ontology [Hyperlink](#)

Gene Summary This gene is a member of the vesicular amine transporter family. The encoded transmembrane protein transports acetylcholine into secretory vesicles for release into the extracellular space. Acetylcholine transport utilizes a proton gradient established by a vacuolar ATPase. This gene is located within the first intron of the choline acetyltransferase gene. [provided by RefSeq]

Other Designations OTTHUMP00000019582|solute carrier family 18, member 3|vesicular acetylcholine transporter

Disease

- [Alzheimer disease](#)
- [Cerebral Amyloid Angiopathy](#)
- [Genetic Predisposition to Disease](#)
- [Neuroblastoma](#)
- [Tobacco Use Disorder](#)