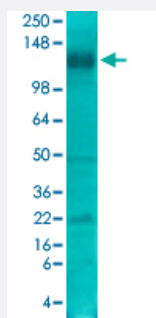


Slc12a5 monoclonal antibody, clone S1-12 (ATTO 390)

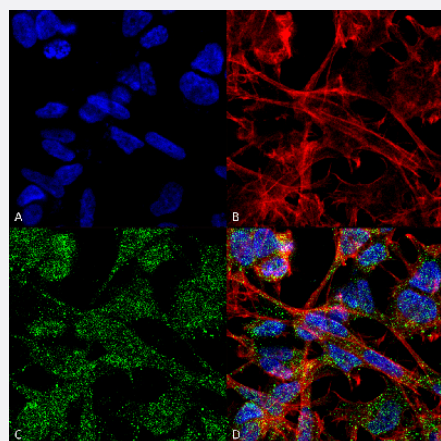
Catalog # MAB18177 Size 100 ug

Applications



Western Blot (Tissue lysate)

Western Blot analysis of rat brain membrane lysate with Slc12a5 monoclonal antibody, clone S1-12 (ATTO 390) (Cat # MAB18177).



Immunocytochemistry

Immunocytochemical staining of SK-N-BE with Slc12a5 monoclonal antibody, clone S1-12 (ATTO 390) (Cat # MAB18177). (A) DAPI (blue) nuclear stain (B) Phalloidin Texas Red F-Actin stain (C) Slc12a5 Antibody and (D) Composite.

Specification

Product Description	Mouse monoclonal antibody raised against partial recombinant rat Slc12a5.
Immunogen	Recombinant protein corresponding to amino acids 932-1043 of rat Slc12a5.
Host	Mouse
Reactivity	Human, Rat
Form	Liquid

Conjugation	ATTO 390
Purification	Protein G purification
Isotype	IgG2a
Recommend Usage	Immunocytochemistry (1:100) Immunofluorescence (1:100) Immunohistochemistry (Formalin/PFA-fixed paraffin-embedded sections) (1:300) Immunoprecipitation Western Blot (1:1000) The optimal working dilution should be determined by the end user.
Storage Buffer	In PBS, pH 7.4 (50% glycerol, 0.09% sodium azide).
Storage Instruction	Store at -20°C.
Note	This product contains sodium azide: a POISONOUS AND HAZARDOUS SUBSTANCE which should be handled by trained staff only.

Applications

- Western Blot (Tissue lysate)

Western Blot analysis of rat brain membrane lysate with Slc12a5 monoclonal antibody, clone S1-12 (ATTO 390) (Cat # MAB18177).

- Immunohistochemistry (Formalin/PFA-fixed paraffin-embedded sections)

- Immunocytochemistry

Immunocytochemical staining of SK-N-BE with Slc12a5 monoclonal antibody, clone S1-12 (ATTO 390) (Cat # MAB18177). (A) DAPI (blue) nuclear stain (B) Phalloidin Texas Red F-Actin stain (C) Slc12a5 Antibody and (D) Composite.

- Immunofluorescence

- Immunoprecipitation

Gene Info — Slc12a5

Entrez GeneID	171373
Protein Accession#	Q63633
Gene Name	Slc12a5

Gene Alias	Kcc2
Gene Description	solute carrier family 12 (potassium-chloride transporter), member 5
Gene Ontology	Hyperlink
Gene Summary	O
Other Designations	neuronal-specific K-Cl cotransporter solute carrier family 12, member 5