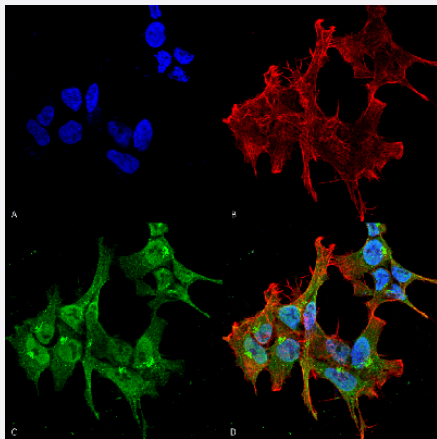


# Pclo monoclonal antibody, clone 6H9-B6 (ATTO 390)

Catalog # MAB18129      Size 100 ug

## Applications



### Immunocytochemistry

Immunocytochemical staining of SK-N-BE with Pclo monoclonal antibody, clone 6H9-B6 (ATTO 390) (Cat # MAB18129). (A) DAPI (blue) nuclear stain (B) Phalloidin Texas Red F-Actin stain (C) Pclo Antibody and (D) Composite.

## Specification

<b>Product Description</b>	Mouse monoclonal antibody raised against full length recombinant mouse Pclo.
<b>Immunogen</b>	Recombinant protein corresponding to full length mouse Pclo.
<b>Host</b>	Mouse
<b>Reactivity</b>	Human, Mouse, Rat
<b>Form</b>	Liquid
<b>Conjugation</b>	ATTO 390
<b>Purification</b>	Protein G purification
<b>Isotype</b>	IgG2b, kappa

<b>Recommend Usage</b>	ELISA Immunocytochemistry (1:100) Immunofluorescence (1:100) Western Blot (1:1000) The optimal working dilution should be determined by the end user.
<b>Storage Buffer</b>	In PBS, pH 7.4 (50% glycerol, 0.09% sodium azide).
<b>Storage Instruction</b>	Store at -20°C.
<b>Note</b>	This product contains sodium azide: a POISONOUS AND HAZARDOUS SUBSTANCE which should be handled by trained staff only.

## Applications

- Western Blot
- Immunocytochemistry  
Immunocytochemical staining of SK-N-BE with Pclo monoclonal antibody, clone 6H9-B6 (ATTO 390) (Cat # MAB18129). (A) DAPI (blue) nuclear stain (B) Phalloidin Texas Red F-Actin stain (C) Pclo Antibody and (D) Composite.
- Immunofluorescence
- Enzyme-linked Immunoabsorbent Assay

## Gene Info — Pclo

<b>Entrez GeneID</b>	<a href="#">26875</a>
<b>Protein Accession#</b>	<a href="#">Q9QYX7</a>
<b>Gene Name</b>	Pclo
<b>Gene Alias</b>	Acz, Pico, mKIAA0559
<b>Gene Description</b>	piccolo (presynaptic cytomatrix protein)
<b>Gene Ontology</b>	<a href="#">Hyperlink</a>
<b>Other Designations</b>	aczonin piccolo