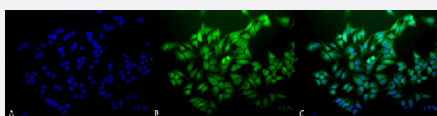


Ubiquitin monoclonal antibody, clone 6C11-B3 (PerCP)

Catalog # MAB18116 Size 200 ug

Applications

Immunocytochemistry



Immunocytochemical staining of HeLa cells with Ubiquitin monoclonal antibody, clone 6C11-B3 (PerCP) (Cat # MAB18116). (A) DAPI (blue) nuclear stain. (B) Anti-Ubiquitin Antibody. (C) Composite.

Specification

Product Description	Mouse monoclonal antibody raised against bovine Ubiquitin.
Immunogen	Native bovine ubiquitin, conjugated to KLH.
Host	Mouse
Reactivity	Bovine, Human
Form	Liquid
Conjugation	PerCP
Purification	Protein G purification
Isotype	IgG2a, kappa
Recommend Usage	ELISA Immunocytochemistry (1:100) Immunofluorescence (1:100) Western Blot (1:1000) The optimal working dilution should be determined by the end user.
Storage Buffer	In PBS, pH 7.4 (50% glycerol, 0.09% sodium azide).

Storage Instruction

Store at -20°C.

Note

This product contains sodium azide: a POISONOUS AND HAZARDOUS SUBSTANCE which should be handled by trained staff only.

Applications

- Western Blot
- Immunocytochemistry
Immunocytochemical staining of HeLa cells with Ubiquitin monoclonal antibody, clone 6C11-B3 (PerCP) (Cat # MAB18116). (A) DAPI (blue) nuclear stain. (B) Anti-Ubiquitin Antibody. (C) Composite.
- Immunofluorescence
- Enzyme-linked Immunoabsorbent Assay

Gene Info — LOC281370

Entrez GeneID [281370](#)**Protein Accession#** [P0CG53](#)**Gene Name** LOC281370**Gene Alias** -**Gene Description** polyubiquitin**Gene Ontology** [Hyperlink](#)**Other Designations** -