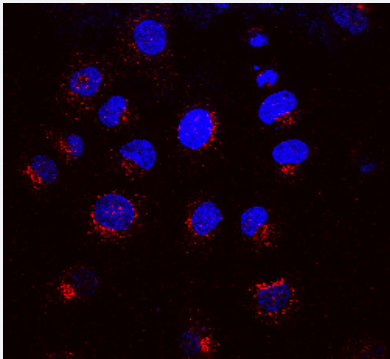


# KDEL R1 monoclonal antibody, clone KR-10 (PerCP)

Catalog # MAB18056      Size 100 ug

## Applications



### Immunocytochemistry

Immunocytochemical staining of NRK cells with KDEL R1 monoclonal antibody, clone KR-10 (PerCP) (Cat # MAB18056) (Red).

## Specification

Product Description	Mouse monoclonal antibody raised against synthetic peptide of bovine KDEL R1.
Immunogen	A synthetic peptide (conjugated with KLH) corresponding to amino acids 192-212 of bovine KDEL R1.
Host	Mouse
Reactivity	Bovine
Form	Liquid
Conjugation	PerCP
Purification	Protein G purification
Isotype	IgG1

**Recommend Usage**

Immunocytochemistry (1:1000)  
Immunofluorescence (1:1000)  
Immunohistochemistry (Formalin/PFA-fixed paraffin-embedded sections)  
Immunoprecipitation  
Western Blot (1:1000)  
The optimal working dilution should be determined by the end user.

**Storage Buffer**

In PBS, pH 7.2 (50% glycerol, 0.09% sodium azide).

**Storage Instruction**

Store at -20°C.

**Note**

This product contains sodium azide: a POISONOUS AND HAZARDOUS SUBSTANCE which should be handled by trained staff only.

## Applications

- Western Blot
- Immunohistochemistry (Formalin/PFA-fixed paraffin-embedded sections)
- Immunocytochemistry  
Immunocytochemical staining of NRK cells with KDELR1 monoclonal antibody, clone KR-10 (PerCP) (Cat # MAB18056) (Red).
- Immunofluorescence
- Immunoprecipitation

## Gene Info — KDELR1

**Entrez GeneID**

[618184](#)

**Protein Accession#**

[P33946](#)

**Gene Name**

KDELR1

**Gene Alias**

MGC139648

**Gene Description**

KDEL (Lys-Asp-Glu-Leu) endoplasmic reticulum protein retention receptor 1

**Gene Ontology**

[Hyperlink](#)

**Other Designations**

KDEL endoplasmic reticulum protein retention receptor 1