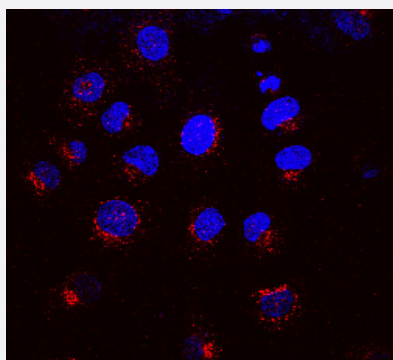


# KDEL R1 monoclonal antibody, clone KR-10 (ATTO 594)

Catalog # MAB18049      Size 100 ug

## Applications



### Immunocytochemistry

Immunocytochemical staining of NRK cells with KDEL R1 monoclonal antibody, clone KR-10 (ATTO 594) (Cat # MAB18049) (Red).

## Specification

Product Description	Mouse monoclonal antibody raised against synthetic peptide of bovine KDEL R1.
Immunogen	A synthetic peptide (conjugated with KLH) corresponding to amino acids 192-212 of bovine KDEL R1.
Host	Mouse
Reactivity	Bovine
Form	Liquid
Conjugation	ATTO 594
Purification	Protein G purification
Isotype	IgG1

<b>Recommend Usage</b>	Immunocytochemistry (1:1000) Immunofluorescence (1:1000) Immunohistochemistry (Formalin/PFA-fixed paraffin-embedded sections) Immunoprecipitation Western Blot (1:1000) The optimal working dilution should be determined by the end user.
<b>Storage Buffer</b>	In PBS, pH 7.2 (50% glycerol, 0.09% sodium azide).
<b>Storage Instruction</b>	Store at -20°C.
<b>Note</b>	This product contains sodium azide: a POISONOUS AND HAZARDOUS SUBSTANCE which should be handled by trained staff only.

## Applications

- Western Blot
- Immunohistochemistry (Formalin/PFA-fixed paraffin-embedded sections)
- Immunocytochemistry  
Immunocytochemical staining of NRK cells with KDEL R1 monoclonal antibody, clone KR-10 (ATTO 594) (Cat # MAB18049) (Red).
- Immunofluorescence
- Immunoprecipitation

## Gene Info — KDEL R1

<b>Entrez GeneID</b>	<a href="#">618184</a>
<b>Protein Accession#</b>	<a href="#">P33946</a>
<b>Gene Name</b>	KDEL R1
<b>Gene Alias</b>	MGC139648
<b>Gene Description</b>	KDEL (Lys-Asp-Glu-Leu) endoplasmic reticulum protein retention receptor 1
<b>Gene Ontology</b>	<a href="#">Hyperlink</a>
<b>Other Designations</b>	KDEL endoplasmic reticulum protein retention receptor 1