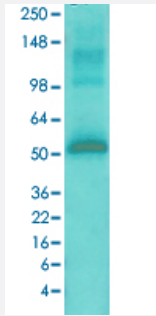


Camk2a monoclonal antibody, clone 6G9 (ATTO 488)

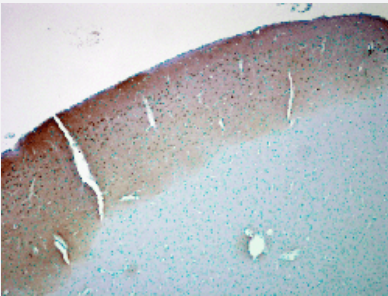
Catalog # MAB18035 Size 100 ug

Applications



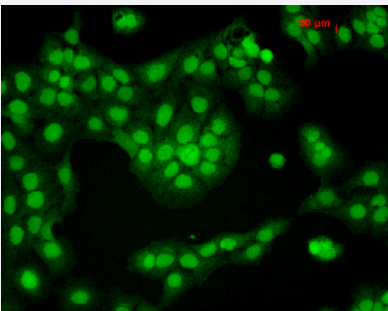
Western Blot (Tissue lysate)

Western Blot analysis of rat brain membrane lysate with Camk2a monoclonal antibody, clone 6G9 (ATTO 488) (Cat # MAB18035).



Immunohistochemistry (Formalin/PFA-fixed paraffin-embedded sections)

Immunohistochemical staining (Formalin-fixed paraffin-embedded sections) of human colon cancer with Camk2a monoclonal antibody, clone 6G9 (ATTO 488) (Cat # MAB18035).



Immunocytochemistry

Immunocytochemical staining of HaCaT with Camk2a monoclonal antibody, clone 6G9 (ATTO 488) (Cat # MAB18035).

Specification

Product Description	Mouse monoclonal antibody raised against rat Camk2a.
Immunogen	Partially purified rat Camk2a.

Host	Mouse
Reactivity	Rat
Form	Liquid
Conjugation	ATTO 488
Purification	Protein G purification
Isotype	IgG1
Recommend Usage	ELISA Immunocytochemistry (1:50) Immunofluorescence (1:50) Immunohistochemistry (Formalin/PFA-fixed paraffin-embedded sections) (1:2000) Immunoprecipitation Radioimmunoassay Western Blot (1:10000) The optimal working dilution should be determined by the end user.
Storage Buffer	In PBS, pH 7.4 (50% glycerol, 0.09% sodium azide).
Storage Instruction	Store at -20°C.
Note	This product contains sodium azide: a POISONOUS AND HAZARDOUS SUBSTANCE which should be handled by trained staff only.

Applications

- Western Blot (Tissue lysate)

Western Blot analysis of rat brain membrane lysate with Camk2a monoclonal antibody, clone 6G9 (ATTO 488) (Cat # MAB18035).

- Immunohistochemistry (Formalin/PFA-fixed paraffin-embedded sections)

Immunohistochemical staining (Formalin-fixed paraffin-embedded sections) of human colon cancer with Camk2a monoclonal antibody, clone 6G9 (ATTO 488) (Cat # MAB18035).

- Immunocytochemistry

Immunocytochemical staining of HaCaT with Camk2a monoclonal antibody, clone 6G9 (ATTO 488) (Cat # MAB18035).

- Immunofluorescence

- Immunoprecipitation

- Enzyme-linked Immunoabsorbent Assay
- Radioimmunoassay

Gene Info — Camk2a

Entrez GeneID [25400](#)

Protein Accession# [P11275](#)

Gene Name Camk2a

Gene Alias PK2CDD, PKCCD

Gene Description calcium/calmodulin-dependent protein kinase II alpha

Gene Ontology [Hyperlink](#)

Other Designations Ca²⁺/calmodulin-dependent protein kinase II alpha|alpha CaM kinase II|calcium/calmodulin-dependent protein kinase (CaM kinase) II alpha|calcium/calmodulin-dependent protein kinase II alpha subunit