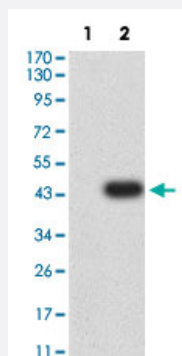


LAIR1 monoclonal antibody, clone 1G8B6

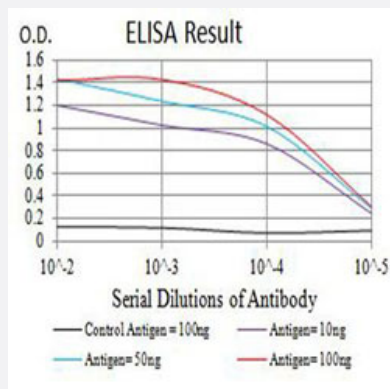
Catalog # MAB18002 Size 100 ug

Applications



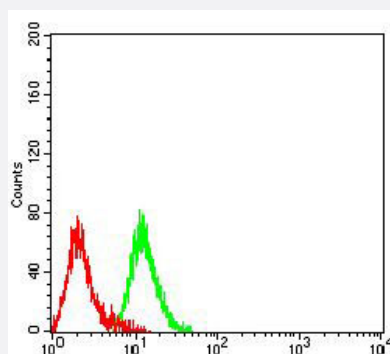
Western Blot (Transfected lysate)

Western Blot analysis of Lane 1: HEK293 and Lane 2: LAIR1-hlgFc transfected HEK293 cell lysates with LAIR1 monoclonal antibody, clone 1G8B6 (Cat # MAB18002).



Enzyme-linked Immunoabsorbent Assay

ELISA analysis with LAIR1 monoclonal antibody, clone 1G8B6 (Cat # MAB18002).



Flow Cytometry

Flow cytometric analysis of Raji cells with LAIR1 monoclonal antibody, clone 1G8B6 (Cat # MAB18002) (Green). Red: Negative Control.

Specification

Product Description	Mouse monoclonal antibody raised against partial recombinant human LAIR1.
Immunogen	Recombinant protein corresponding to amino acids 22-165 of human LAIR1.
Host	Mouse
Theoretical MW (kDa)	31.4
Reactivity	Human
Form	Liquid
Isotype	IgG1
Recommend Usage	ELISA (1:10000) Flow Cytometry (1:200-1:400) Western Blot (1:100-1:500) The optimal working dilution should be determined by the end user.
Storage Buffer	In PBS (0.05% sodium azide).
Storage Instruction	Store at 4°C. For long term storage store at -20°C. Aliquot to avoid repeated freezing and thawing.
Note	This product contains sodium azide: a POISONOUS AND HAZARDOUS SUBSTANCE which should be handled by trained staff only.

Applications

- Western Blot (Transfected lysate)

Western Blot analysis of Lane 1: HEK293 and Lane 2: LAIR1-hlgGfc transfected HEK293 cell lysates with LAIR1 monoclonal antibody, clone 1G8B6 (Cat # MAB18002).

- Enzyme-linked Immunoabsorbent Assay

ELISA analysis with LAIR1 monoclonal antibody, clone 1G8B6 (Cat # MAB18002).

- Flow Cytometry

Flow cytometric analysis of Raji cells with LAIR1 monoclonal antibody, clone 1G8B6 (Cat # MAB18002) (Green). Red: Negative Control.

Gene Info — LAIR1

Entrez GeneID [3903](#)

Protein Accession# [Q6GTX8](#)

Gene Name	LAIR1
Gene Alias	CD305, LAIR-1
Gene Description	leukocyte-associated immunoglobulin-like receptor 1
Omim ID	602992
Gene Ontology	Hyperlink
Gene Summary	<p>The protein encoded by this gene is an inhibitory receptor found on peripheral mononuclear cells, including NK cells, T cells, and B cells. Inhibitory receptors regulate the immune response to prevent lysis of cells recognized as self. The gene is a member of both the immunoglobulin superfamily and the leukocyte-associated inhibitory receptor family. The gene maps to a region of 19q13.4 called the leukocyte receptor cluster, which contains at least 29 genes encoding leukocyte-expressed receptors of the immunoglobulin superfamily. [provided by RefSeq]</p>
Other Designations	leukocyte-associated Ig-like receptor 1