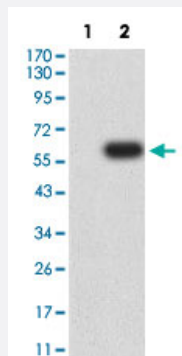


CD1B monoclonal antibody, clone 1D6B7

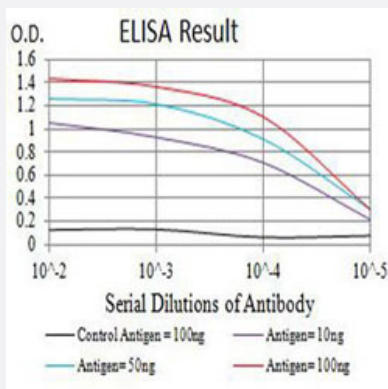
Catalog # MAB18001 Size 100 ug

Applications



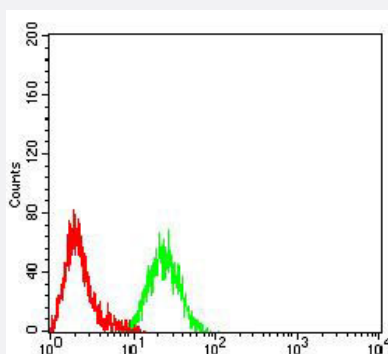
Western Blot (Transfected lysate)

Western Blot analysis of Lane 1: HEK293 and Lane 2: CD1B-hlgGfc transfected HEK293 cell lysates with CD1B monoclonal antibody, clone 1D6B7 (Cat # MAB18001).



Enzyme-linked Immunoabsorbent Assay

ELISA analysis with CD1B monoclonal antibody, clone 1D6B7 (Cat # MAB18001).



Flow Cytometry

Flow cytometric analysis of Raji cells with CD1B monoclonal antibody, clone 1D6B7 (Cat # MAB18001) (Green). Red: Negative Control.

Specification

Product Description	Mouse monoclonal antibody raised against partial recombinant human CD1B.
Immunogen	Recombinant protein corresponding to amino acids 18-303 of human CD1B.
Host	Mouse
Theoretical MW (kDa)	37
Reactivity	Human
Form	Liquid
Isotype	IgG2b
Recommend Usage	ELISA (1:10000) Flow Cytometry (1:200-1:400) Western Blot (1:100-1:500) The optimal working dilution should be determined by the end user.
Storage Buffer	In PBS (0.05% sodium azide).
Storage Instruction	Store at 4°C. For long term storage store at -20°C. Aliquot to avoid repeated freezing and thawing.
Note	This product contains sodium azide: a POISONOUS AND HAZARDOUS SUBSTANCE which should be handled by trained staff only.

Applications

- Western Blot (Transfected lysate)

Western Blot analysis of Lane 1: HEK293 and Lane 2: CD1B-hlgGfc transfected HEK293 cell lysates with CD1B monoclonal antibody, clone 1D6B7 (Cat # MAB18001).

- Enzyme-linked Immunoabsorbent Assay

ELISA analysis with CD1B monoclonal antibody, clone 1D6B7 (Cat # MAB18001).

- Flow Cytometry

Flow cytometric analysis of Raji cells with CD1B monoclonal antibody, clone 1D6B7 (Cat # MAB18001) (Green). Red: Negative Control.

Gene Info — CD1B

Entrez GeneID [910](#)

Protein Accession# [P29016](#)

Gene Name	CD1B
Gene Alias	CD1, CD1A, MGC125990, MGC125991, R1
Gene Description	CD1b molecule
Omim ID	188360
Gene Ontology	Hyperlink
Gene Summary	<p>This gene encodes a member of the CD1 family of transmembrane glycoproteins, which are structurally related to the major histocompatibility complex (MHC) proteins and form heterodimers with beta-2-microglobulin. The CD1 proteins mediate the presentation of primarily lipid and glycolipid antigens of self or microbial origin to T cells. The human genome contains five CD1 family genes organized in a cluster on chromosome 1. The CD1 family members are thought to differ in their cellular localization and specificity for particular lipid ligands. The protein encoded by this gene localizes to late endosomes and lysosomes via a tyrosine-based motif in the cytoplasmic tail, and requires vesicular acidification to bind lipid antigens. [provided by RefSeq]</p>
Other Designations	CD1B antigen CD1B antigen, b polypeptide OTTHUMP00000018908 T-cell surface glycoprotein CD1b cortical thymocyte antigen CD1B differentiation antigen CD1-alpha-3

Pathway

- [Hematopoietic cell lineage](#)

Disease

- [Lung Diseases](#)
- [Mycobacterium Infections](#)