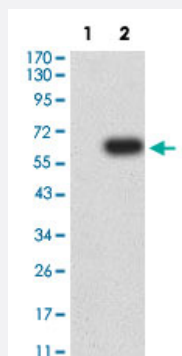


# CD1C monoclonal antibody, clone 2A7C11

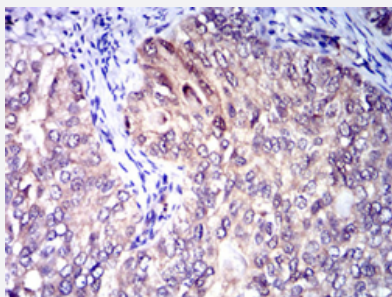
Catalog # MAB17992      Size 100 ug

## Applications



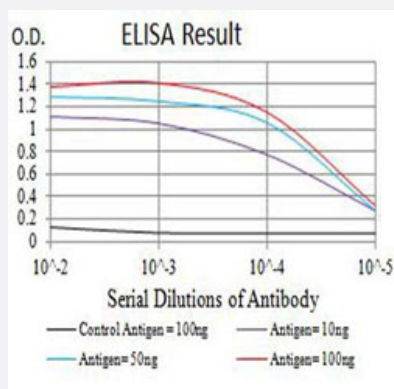
### Western Blot (Transfected lysate)

Western Blot analysis of Lane 1: HEK293 and Lane 2: CD1C-hlgGfC transfected HEK293 cell lysates with CD1C monoclonal antibody, clone 2A7C11 (Cat # MAB17992).



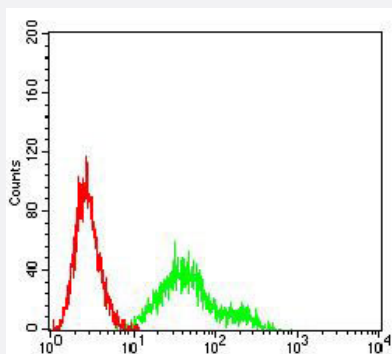
### Immunohistochemistry (Formalin/PFA-fixed paraffin-embedded sections)

Immunohistochemical analysis of paraffin-embedded cervical cancer tissues with DAB staining.



### Enzyme-linked Immunoabsorbent Assay

ELISA analysis with CD1C monoclonal antibody, clone 2A7C11 (Cat # MAB17992).



## Flow Cytometry

Flow cytometric analysis of Ramos cells with CD1C monoclonal antibody, clone 2A7C11 (Cat # MAB17992) (Green). Red: Negative Control.

## Specification

<b>Product Description</b>	Mouse monoclonal antibody raised against partial recombinant human CD1C.
<b>Immunogen</b>	Recombinant protein corresponding to amino acids 18-302 of human CD1C.
<b>Host</b>	Mouse
<b>Theoretical MW (kDa)</b>	37.7
<b>Reactivity</b>	Human
<b>Form</b>	Liquid
<b>Isotype</b>	IgG2b
<b>Recommend Usage</b>	ELISA (1:10000) Flow Cytometry (1:200-1:400) Immunohistochemistry (Formalin/PFA-fixed paraffin-embedded sections) (1:200-1:1000) Western Blot (1:500-1:2000) The optimal working dilution should be determined by the end user.
<b>Storage Buffer</b>	In PBS (0.05% sodium azide).
<b>Storage Instruction</b>	Store at 4°C. For long term storage store at -20°C. Aliquot to avoid repeated freezing and thawing.
<b>Note</b>	This product contains sodium azide: a POISONOUS AND HAZARDOUS SUBSTANCE which should be handled by trained staff only.

## Applications

- Western Blot (Transfected lysate)

Western Blot analysis of Lane 1: HEK293 and Lane 2: CD1C-hlgFc transfected HEK293 cell lysates with CD1C monoclonal antibody, clone 2A7C11 (Cat # MAB17992).

- Immunohistochemistry (Formalin/PFA-fixed paraffin-embedded sections)

Immunohistochemical analysis of paraffin-embedded cervical cancer tissues with DAB staining.

- Enzyme-linked Immunoabsorbent Assay

ELISA analysis with CD1C monoclonal antibody, clone 2A7C11 (Cat # MAB17992).

- Flow Cytometry

Flow cytometric analysis of Ramos cells with CD1C monoclonal antibody, clone 2A7C11 (Cat # MAB17992) (Green). Red: Negative Control.

## Gene Info — CD1C

Entrez GeneID [911](#)

Protein Accession# [P29017](#)

Gene Name CD1C

Gene Alias BDCA1, CD1, CD1A, R7

Gene Description CD1c molecule

Omim ID [188340](#)

Gene Ontology [Hyperlink](#)

**Gene Summary** This gene encodes a member of the CD1 family of transmembrane glycoproteins, which are structurally related to the major histocompatibility complex (MHC) proteins and form heterodimers with beta-2-microglobulin. The CD1 proteins mediate the presentation of primarily lipid and glycolipid antigens of self or microbial origin to T cells. The human genome contains five CD1 family genes organized in a cluster on chromosome 1. The CD1 family members are thought to differ in their cellular localization and specificity for particular lipid ligands. The protein encoded by this gene is broadly distributed throughout the endocytic system via a tyrosine-based motif in the cytoplasmic tail. Alternatively spliced transcript variants of this gene have been observed, but their full-length nature is not known. [provided by RefSeq]

**Other Designations** CD1C antigen|CD1C antigen, c polypeptide|OTTHUMP00000018909|T-cell surface glycoprotein CD1c|cortical thymocyte antigen CD1C|differentiation antigen CD1-alpha-3

## Pathway

- [Hematopoietic cell lineage](#)

## Disease

- [Lung Diseases](#)
- [Mycobacterium Infections](#)