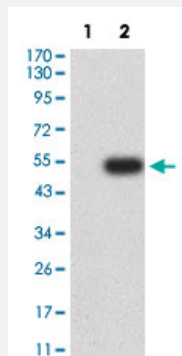


# ICAM2 monoclonal antibody, clone 6B9G10

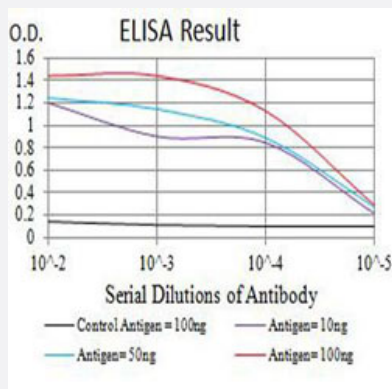
Catalog # MAB17988      Size 100 ug

## Applications



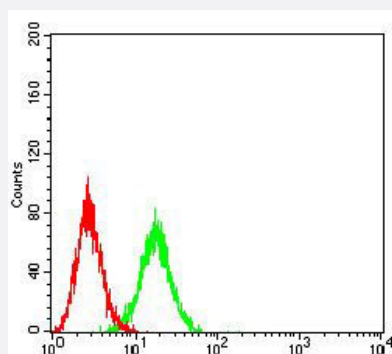
### Western Blot (Transfected lysate)

Western Blot analysis of Lane 1: HEK293 and Lane 2: ICAM2-hlgGfc transfected HEK293 cell lysates with ICAM2 monoclonal antibody, clone 6B9G10 (Cat # MAB17988).



### Enzyme-linked Immunoabsorbent Assay

ELISA analysis with ICAM2 monoclonal antibody, clone 6B9G10 (Cat # MAB17988).



### Flow Cytometry

Flow cytometric analysis of Ramos cells with ICAM2 monoclonal antibody, clone 6B9G10 (Cat # MAB17988) (Green). Red: Negative Control.

## Specification

Product Description	Mouse monoclonal antibody raised against partial recombinant human ICAM2.
Immunogen	Recombinant protein corresponding to amino acids 25-223 of human ICAM2.
Host	Mouse
Theoretical MW (kDa)	30.7
Reactivity	Human
Form	Liquid
Isotype	IgG1
Recommend Usage	ELISA (1:10000) Flow Cytometry (1:200-1:400) Western Blot (1:100-1:500) The optimal working dilution should be determined by the end user.
Storage Buffer	In PBS (0.05% sodium azide).
Storage Instruction	Store at 4°C. For long term storage store at -20°C. Aliquot to avoid repeated freezing and thawing.
Note	This product contains sodium azide: a POISONOUS AND HAZARDOUS SUBSTANCE which should be handled by trained staff only.

## Applications

- Western Blot (Transfected lysate)

Western Blot analysis of Lane 1: HEK293 and Lane 2: ICAM2-hlgGfc transfected HEK293 cell lysates with ICAM2 monoclonal antibody, clone 6B9G10 (Cat # MAB17988).

- Enzyme-linked Immunoabsorbent Assay

ELISA analysis with ICAM2 monoclonal antibody, clone 6B9G10 (Cat # MAB17988).

- Flow Cytometry

Flow cytometric analysis of Ramos cells with ICAM2 monoclonal antibody, clone 6B9G10 (Cat # MAB17988) (Green). Red: Negative Control.

## Gene Info — ICAM2

Entrez GeneID [3384](#)

Protein Accession# [P13598](#)

Gene Name	ICAM2
Gene Alias	CD102
Gene Description	intercellular adhesion molecule 2
Omim ID	<a href="#">146630</a>
Gene Ontology	<a href="#">Hyperlink</a>
Gene Summary	<p>The protein encoded by this gene is a member of the intercellular adhesion molecule (ICAM) family. All ICAM proteins are type I transmembrane glycoproteins, contain 2-9 immunoglobulin-like C2-type domains, and bind to the leukocyte adhesion LFA-1 protein. This protein may play a role in lymphocyte recirculation by blocking LFA-1-dependent cell adhesion. It mediates adhesive interactions important for antigen-specific immune response, NK-cell mediated clearance, lymphocyte recirculation, and other cellular interactions important for immune response and surveillance. Several transcript variants encoding the same protein have been found for this gene. [provided by RefSeq]</p>
Other Designations	-

## Pathway

- [Cell adhesion molecules \(CAMs\)](#)
- [Natural killer cell mediated cytotoxicity](#)

## Disease

- [Birth Weight](#)
- [Genetic Predisposition to Disease](#)
- [Glioblastoma](#)
- [Glioma](#)
- [Leukemia](#)
- [Meningeal Neoplasms](#)
- [Meningioma](#)