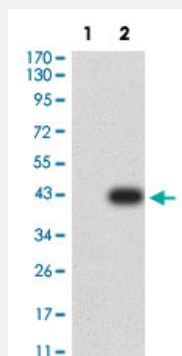


ATPIF1 monoclonal antibody, clone 1F3B8

Catalog # MAB17937

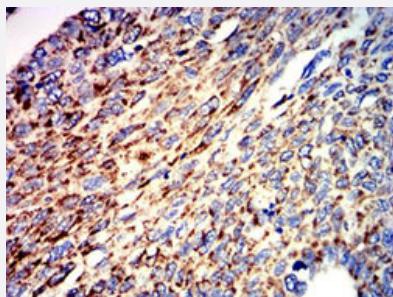
Size 100 ug

Applications



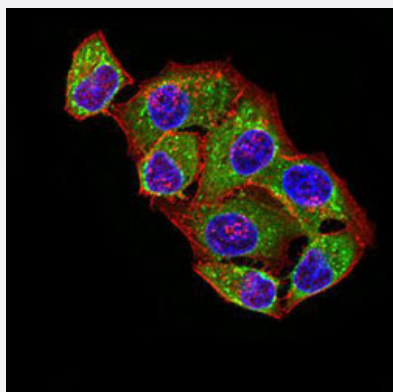
Western Blot (Transfected lysate)

Western Blot analysis of Lane 1: HEK293 and Lane 2: ATPIF1-hlgGfc transfected HEK293 cell lysates with ATPIF1 monoclonal antibody, clone 1F3B8 (Cat # MAB17937).



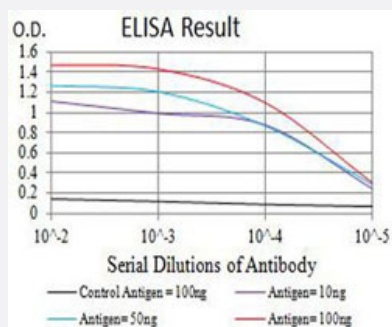
Immunohistochemistry (Formalin/PFA-fixed paraffin-embedded sections)

Immunohistochemical staining (Formalin-fixed paraffin-embedded sections) of human lung cancer with ATPIF1 monoclonal antibody, clone 1F3B8 (Cat # MAB17937).



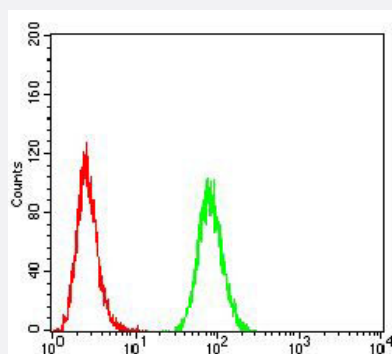
Immunofluorescence

Immunofluorescent staining of HeLa cells with ATPIF1 monoclonal antibody, clone 1F3B8 (Cat # MAB17937) (Green). Blue: DRAQ5 fluorescent DNA dye. Red: Actin filaments have been labeled with Alexa Fluor- 555 phalloidin.



Enzyme-linked Immunoabsorbent Assay

ELISA analysis with ATPIF1 monoclonal antibody, clone 1F3B8 (Cat # MAB17937).



Flow Cytometry

Flow cytometric analysis of HeLa cells with ATPIF1 monoclonal antibody, clone 1F3B8 (Cat # MAB17937) (Green). Red: Negative Control.

Specification

Product Description Mouse monoclonal antibody raised against full length recombinant human ATPIF1.

Immunogen Recombinant protein corresponding to full length human ATPIF1.

Host Mouse

Theoretical MW (kDa) 12.3

Reactivity Human

Form Liquid

Isotype IgG2b

Recommend Usage

- ELISA (1:10000)
- Flow Cytometry (1:200-1:400)
- Immunofluorescence (1:100-1:500)
- Immunohistochemistry (Formalin/PFA-fixed paraffin-embedded sections)
- Western Blot (1:100-1:500)
- The optimal working dilution should be determined by the end user.

Storage Buffer In PBS (0.05% sodium azide).

Storage Instruction

- Store at 4°C. For long term storage store at -20°C.
- Aliquot to avoid repeated freezing and thawing.

Note

This product contains sodium azide: a POISONOUS AND HAZARDOUS SUBSTANCE which should be handled by trained staff only.

Applications

- Western Blot (Transfected lysate)

Western Blot analysis of Lane 1: HEK293 and Lane 2: ATP1F1-hlgGfC transfected HEK293 cell lysates with ATP1F1 monoclonal antibody, clone 1F3B8 (Cat # MAB17937).

- Immunohistochemistry (Formalin/PFA-fixed paraffin-embedded sections)

Immunohistochemical staining (Formalin-fixed paraffin-embedded sections) of human lung cancer with ATP1F1 monoclonal antibody, clone 1F3B8 (Cat # MAB17937).

- Immunofluorescence

Immunofluorescent staining of HeLa cells with ATP1F1 monoclonal antibody, clone 1F3B8 (Cat # MAB17937) (Green). Blue: DRAQ5 fluorescent DNA dye. Red: Actin filaments have been labeled with Alexa Fluor- 555 phalloidin.

- Enzyme-linked Immunoabsorbent Assay

ELISA analysis with ATP1F1 monoclonal antibody, clone 1F3B8 (Cat # MAB17937).

- Flow Cytometry

Flow cytometric analysis of HeLa cells with ATP1F1 monoclonal antibody, clone 1F3B8 (Cat # MAB17937) (Green). Red: Negative Control.

Gene Info — ATP1F1

| | |
|---------------|-----------------------|
| Entrez GeneID | 93974 |
|---------------|-----------------------|

| | |
|-----------|--------|
| Gene Name | ATP1F1 |
|-----------|--------|

| | |
|------------|-----------------------------------|
| Gene Alias | ATPI, ATPIP, IP, MGC1167, MGC8898 |
|------------|-----------------------------------|

| | |
|------------------|----------------------------|
| Gene Description | ATPase inhibitory factor 1 |
|------------------|----------------------------|

| | |
|---------------|---------------------------|
| Gene Ontology | Hyperlink |
|---------------|---------------------------|

| | |
|--------------|---|
| Gene Summary | This gene encodes a mitochondrial ATPase inhibitor. Alternative splicing occurs at this locus and three transcript variants encoding distinct isoforms have been identified. [provided by RefSeq] |
|--------------|---|

| | |
|--------------------|--|
| Other Designations | ATP synthase inhibitor protein ATPase inhibitor protein OTTHUMP00000003642 |
|--------------------|--|

Disease

- [Tobacco Use Disorder](#)