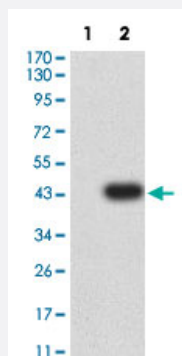


GRM5 monoclonal antibody, clone 1A11D10

Catalog # MAB17931

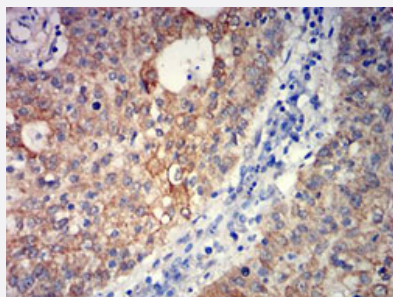
Size 100 ug

Applications



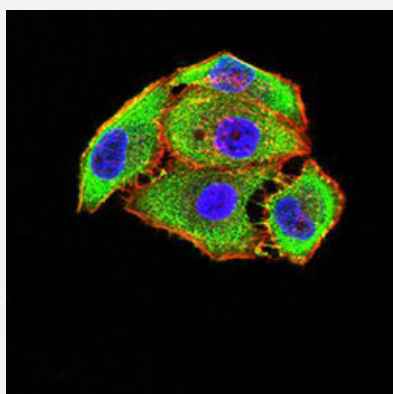
Western Blot (Transfected lysate)

Western Blot analysis of Lane 1: HEK293 and Lane 2: GRM5-hlgGfc transfected HEK293 cell lysates with GRM5 monoclonal antibody, clone 1A11D10 (Cat # MAB17931).



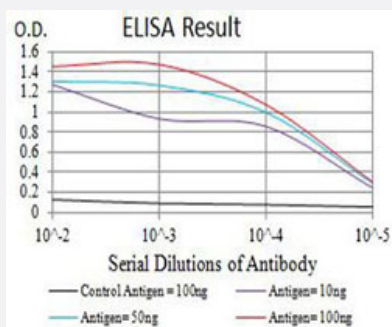
Immunohistochemistry (Formalin/PFA-fixed paraffin-embedded sections)

Immunohistochemical staining (Formalin-fixed paraffin-embedded sections) of human stomach carcinoma with GRM5 monoclonal antibody, clone 1A11D10 (Cat # MAB17931).



Immunofluorescence

Immunofluorescent staining of HeLa cells with GRM5 monoclonal antibody, clone 1A11D10 (Cat # MAB17931) (Green). Blue: DRAQ5 fluorescent DNA dye.



Enzyme-linked Immunoabsorbent Assay

ELISA analysis with GRM5 monoclonal antibody, clone 1A11D10 (Cat # MAB17931).

Specification

Product Description	Mouse monoclonal antibody raised against partial recombinant human GRM5.
Immunogen	Recombinant protein corresponding to amino acids 458-580 of human GRM5.
Host	Mouse
Theoretical MW (kDa)	132.5
Reactivity	Human
Form	Liquid
Isotype	IgG1
Recommend Usage	ELISA (1:10000) Immunofluorescence (1:200-1:1000) Immunohistochemistry (Formalin/PFA-fixed paraffin-embedded sections) Western Blot (1:100-1:500) The optimal working dilution should be determined by the end user.
Storage Buffer	In PBS (0.05% sodium azide).
Storage Instruction	Store at 4°C. For long term storage store at -20°C. Aliquot to avoid repeated freezing and thawing.
Note	This product contains sodium azide: a POISONOUS AND HAZARDOUS SUBSTANCE which should be handled by trained staff only.

Applications

- Western Blot (Transfected lysate)

Western Blot analysis of Lane 1: HEK293 and Lane 2: GRM5-hlgGfc transfected HEK293 cell lysates with GRM5 monoclonal antibody, clone 1A11D10 (Cat # MAB17931).

- Immunohistochemistry (Formalin/PFA-fixed paraffin-embedded sections)

Immunohistochemical staining (Formalin-fixed paraffin-embedded sections) of human stomach carcinoma with GRM5 monoclonal antibody, clone 1A11D10 (Cat # MAB17931).

- Immunofluorescence

Immunofluorescent staining of HeLa cells with GRM5 monoclonal antibody, clone 1A11D10 (Cat # MAB17931) (Green). Blue: DRAQ5 fluorescent DNA dye.

- Enzyme-linked Immunoabsorbent Assay

ELISA analysis with GRM5 monoclonal antibody, clone 1A11D10 (Cat # MAB17931).

Gene Info — GRM5

Entrez GeneID [2915](#)

Protein Accession# [P41594](#)

Gene Name GRM5

Gene Alias GPRC1E, MGLUR5, mGlu5

Gene Description glutamate receptor, metabotropic 5

Omim ID [604102](#)

Gene Ontology [Hyperlink](#)

Gene Summary

L-glutamate is the major excitatory neurotransmitter in the central nervous system and activates both ionotropic and metabotropic glutamate receptors. Glutamatergic neurotransmission is involved in most aspects of normal brain function and can be perturbed in many neuropathologic conditions. The metabotropic glutamate receptors are a family of G protein-coupled receptors, that have been divided into 3 groups on the basis of sequence homology, putative signal transduction mechanisms, and pharmacologic properties. Group I includes GRM1 and GRM5 and these receptors have been shown to activate phospholipase C. Group II includes GRM2 and GRM3 while Group III includes GRM4, GRM6, GRM7 and GRM8. Group II and III receptors are linked to the inhibition of the cyclic AMP cascade but differ in their agonist selectivities. Multiple transcript variants encoding different isoforms have been found for this gene. [provided by RefSeq]

Other Designations -

Pathway

- [Calcium signaling pathway](#)
- [Gap junction](#)
- [Long-term depression](#)
- [Long-term potentiation](#)
- [Neuroactive ligand-receptor interaction](#)

Disease

- [Alcoholism](#)
- [Anorexia Nervosa](#)
- [Bulimia](#)
- [Cardiovascular Diseases](#)
- [Cognition](#)
- [Diabetes Mellitus](#)
- [Edema](#)
- [Genetic Predisposition to Disease](#)
- [Mental Disorders](#)
- [Schizophrenia](#)
- [Schizophrenic Psychology](#)
- [Tobacco Use Disorder](#)
- [Weight Gain](#)