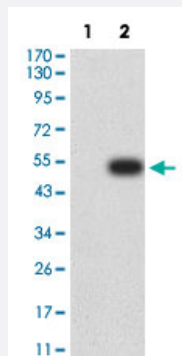


AXIN1 monoclonal antibody, clone 4E9F1

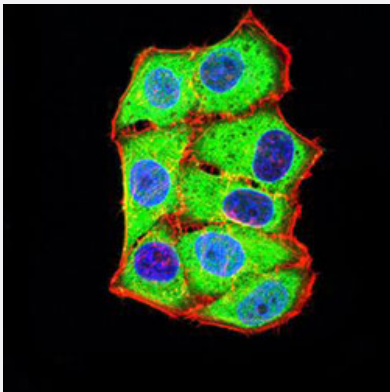
Catalog # MAB17915 Size 100 ug

Applications



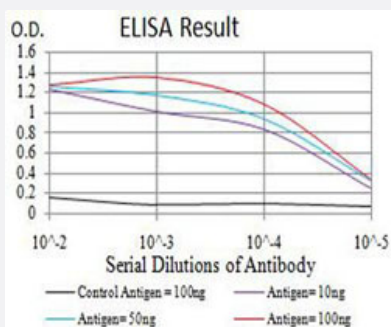
Western Blot (Transfected lysate)

Western Blot analysis of Lane 1: HEK293 and Lane 2: AXIN1-hlgGfc transfected HEK293 cell lysates with AXIN1 monoclonal antibody, clone 4E9F1 (Cat # MAB17915).



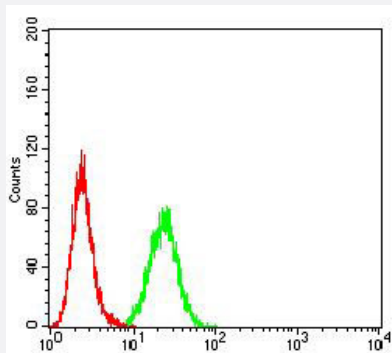
Immunofluorescence

Immunofluorescent staining of HeLa cells with AXIN1 monoclonal antibody, clone 4E9F1 (Cat # MAB17915) (Green). Blue: DRAQ5 fluorescent DNA dye. Red: Actin filaments have been labeled with Alexa Fluor- 555 phalloidin.



Enzyme-linked Immunoabsorbent Assay

ELISA analysis with AXIN1 monoclonal antibody, clone 4E9F1 (Cat # MAB17915).



Flow Cytometry

Flow cytometric analysis of HeLa cells with AXIN1 monoclonal antibody, clone 4E9F1 (Cat # MAB17915) (Green). Red: Negative Control.

Specification

Product Description	Mouse monoclonal antibody raised against partial recombinant human AXIN1.
Immunogen	Recombinant protein corresponding to amino acids 546-752 of human AXIN1.
Host	Mouse
Theoretical MW (kDa)	95.6
Reactivity	Human
Form	Liquid
Isotype	IgG2b
Recommend Usage	ELISA (1:10000) Flow Cytometry (1:200-1:400) Immunofluorescence (1:50-1:250) Western Blot (1:100-1:500) The optimal working dilution should be determined by the end user.
Storage Buffer	In PBS (0.05% sodium azide).
Storage Instruction	Store at 4°C. For long term storage store at -20°C. Aliquot to avoid repeated freezing and thawing.
Note	This product contains sodium azide: a POISONOUS AND HAZARDOUS SUBSTANCE which should be handled by trained staff only.

Applications

- Western Blot (Transfected lysate)

Western Blot analysis of Lane 1: HEK293 and Lane 2: AXIN1-hlgFc transfected HEK293 cell lysates with AXIN1 monoclonal antibody, clone 4E9F1 (Cat # MAB17915).

- Immunofluorescence

Immunofluorescent staining of HeLa cells with AXIN1 monoclonal antibody, clone 4E9F1 (Cat # MAB17915) (Green). Blue: DRAQ5 fluorescent DNA dye. Red: Actin filaments have been labeled with Alexa Fluor- 555 phalloidin.

- Enzyme-linked Immunoabsorbent Assay

ELISA analysis with AXIN1 monoclonal antibody, clone 4E9F1 (Cat # MAB17915).

- Flow Cytometry

Flow cytometric analysis of HeLa cells with AXIN1 monoclonal antibody, clone 4E9F1 (Cat # MAB17915) (Green). Red: Negative Control.

Gene Info — AXIN1

Entrez GeneID [8312](#)

Protein Accession# [O15169](#)

Gene Name AXIN1

Gene Alias AXIN, MGC52315

Gene Description axin 1

Omim ID [114550 603816 607864](#)

Gene Ontology [Hyperlink](#)

Gene Summary This gene encodes a cytoplasmic protein which contains a regulation of G-protein signaling (RGS) domain and a dishevelled and axin (DIX) domain. The encoded protein interacts with adenomatosis polyposis coli, catenin (cadherin-associated protein), beta 1, 88kDa, glycogen synthase kinase 3 beta, protein phosphate 2, and itself. This protein functions as a negative regulator of the wingless-type MMTV integration site family, member 1 (WNT) signaling pathway and can induce apoptosis. The crystal structure of a portion of this protein, alone and in a complex with other proteins, has been resolved. Mutations in this gene have been associated with hepatocellular carcinoma, hepatoblastomas, ovarian endometrioid adenocarcinomas, and medullablastomas. Two transcript variants encoding distinct isoforms have been identified for this gene. [provided by RefSeq]

Other Designations axis inhibition protein 1|axis inhibitor 1|fused, mouse, homolog of

Pathway

- [Basal cell carcinoma](#)
- [Colorectal cancer](#)
- [Endometrial cancer](#)
- [Pathways in cancer](#)
- [Wnt signaling pathway](#)

Disease

- [Adenoma](#)
- [Breast cancer](#)
- [Breast Neoplasms](#)
- [Cardiovascular Diseases](#)
- [Chromosome Deletion](#)
- [Colorectal Neoplasms](#)
- [Diabetes Mellitus](#)
- [Edema](#)
- [Heart Defects](#)
- [Neoplasm Invasiveness](#)
- [Tobacco Use Disorder](#)