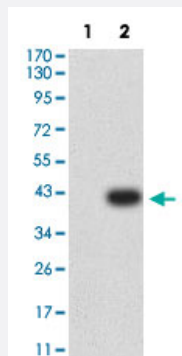


IGLC2 monoclonal antibody, clone 5E12B9

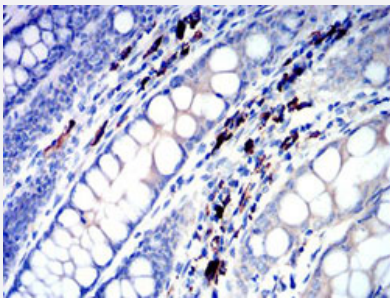
Catalog # MAB17906 Size 100 ug

Applications



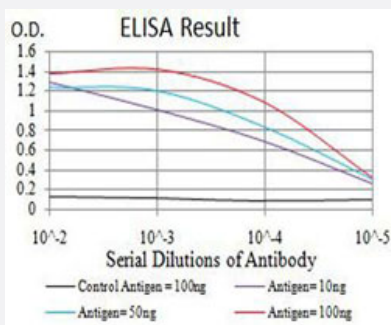
Western Blot (Transfected lysate)

Western Blot analysis of Lane 1: HEK293 and Lane 2: IGLC2-hlgGfC transfected HEK293 cell lysates with IGLC2 monoclonal antibody, clone 5E12B9 (Cat # MAB17906).



Immunohistochemistry (Formalin/PFA-fixed paraffin-embedded sections)

Immunohistochemical staining (Formalin-fixed paraffin-embedded sections) of human colon with IGLC2 monoclonal antibody, clone 5E12B9 (Cat # MAB17906).



Enzyme-linked Immunoabsorbent Assay

ELISA analysis with IGLC2 monoclonal antibody, clone 5E12B9 (Cat # MAB17906).

Specification

Product Description

Mouse monoclonal antibody raised against full length recombinant human IGLC2.

Immunogen	Recombinant protein corresponding to full length human IGLC2.
Host	Mouse
Theoretical MW (kDa)	11.3
Reactivity	Human
Form	Liquid
Isotype	IgG1
Recommend Usage	ELISA (1:10000) Immunohistochemistry (Formalin/PFA-fixed paraffin-embedded sections) Western Blot (1:100-1:500) The optimal working dilution should be determined by the end user.
Storage Buffer	In PBS (0.05% sodium azide).
Storage Instruction	Store at 4°C. For long term storage store at -20°C. Aliquot to avoid repeated freezing and thawing.
Note	This product contains sodium azide: a POISONOUS AND HAZARDOUS SUBSTANCE which should be handled by trained staff only.

Applications

- Western Blot (Transfected lysate)

Western Blot analysis of Lane 1: HEK293 and Lane 2: IGLC2-hlgGFc transfected HEK293 cell lysates with IGLC2 monoclonal antibody, clone 5E12B9 (Cat # MAB17906).

- Immunohistochemistry (Formalin/PFA-fixed paraffin-embedded sections)

Immunohistochemical staining (Formalin-fixed paraffin-embedded sections) of human colon with IGLC2 monoclonal antibody, clone 5E12B9 (Cat # MAB17906).

- Enzyme-linked Immunoabsorbent Assay

ELISA analysis with IGLC2 monoclonal antibody, clone 5E12B9 (Cat # MAB17906).

Gene Info — IGLC2

Entrez GeneID	3538
Protein Accession#	P0DOY2
Gene Name	IGLC2

Gene Alias	IGLC, MGC20392, MGC45681
Gene Description	immunoglobulin lambda constant 2 (Kern-Oz- marker)
Gene Ontology	Hyperlink
Other Designations	-