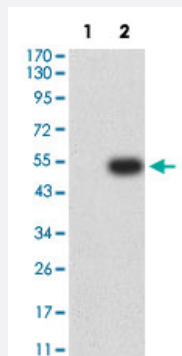


ASF1B monoclonal antibody, clone 6G7G4

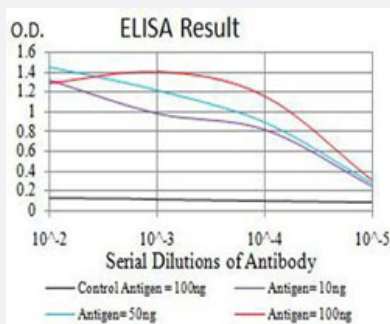
Catalog # MAB17905 Size 100 ug

Applications



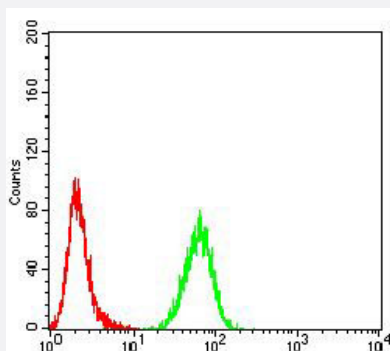
Western Blot (Transfected lysate)

Western Blot analysis of Lane 1: HEK293 and Lane 2: ASF1B-hlgGfC transfected HEK293 cell lysates with ASF1B monoclonal antibody, clone 6G7G4 (Cat # MAB17905).



Enzyme-linked Immunoabsorbent Assay

ELISA analysis with ASF1B monoclonal antibody, clone 6G7G4 (Cat # MAB17905).



Flow Cytometry

Flow cytometric analysis of K562 cells with ASF1B monoclonal antibody, clone 6G7G4 (Cat # MAB17905) (Green). Red: Negative Control.

Specification

Product Description

Mouse monoclonal antibody raised against full length recombinant human ASF1B.

Immunogen	Recombinant protein corresponding to full length human ASF1B.
Host	Mouse
Theoretical MW (kDa)	22.4
Reactivity	Human
Form	Liquid
Isotype	IgG1
Recommend Usage	ELISA (1:10000) Flow Cytometry (1:200-1:400) Western Blot (1:100-1:500) The optimal working dilution should be determined by the end user.
Storage Buffer	In PBS (0.05% sodium azide).
Storage Instruction	Store at 4°C. For long term storage store at -20°C. Aliquot to avoid repeated freezing and thawing.
Note	This product contains sodium azide: a POISONOUS AND HAZARDOUS SUBSTANCE which should be handled by trained staff only.

Applications

- Western Blot (Transfected lysate)

Western Blot analysis of Lane 1: HEK293 and Lane 2: ASF1B-hlgGfC transfected HEK293 cell lysates with ASF1B monoclonal antibody, clone 6G7G4 (Cat # MAB17905).

- Enzyme-linked Immunoabsorbent Assay

ELISA analysis with ASF1B monoclonal antibody, clone 6G7G4 (Cat # MAB17905).

- Flow Cytometry

Flow cytometric analysis of K562 cells with ASF1B monoclonal antibody, clone 6G7G4 (Cat # MAB17905) (Green). Red: Negative Control.

Gene Info — ASF1B

Entrez GeneID	55723
Protein Accession#	Q9NVP2
Gene Name	ASF1B

Gene Alias	CIA-II, FLJ10604
Gene Description	ASF1 anti-silencing function 1 homolog B (S. cerevisiae)
Omim ID	609190
Gene Ontology	Hyperlink
Gene Summary	<p>This gene encodes a member of the H3/H4 family of histone chaperone proteins and is similar to the anti-silencing function-1 gene in yeast. The encoded protein is the substrate of the tousel-like kinase family of cell cycle-regulated kinases, and may play a key role in modulating the nucleosome structure of chromatin by ensuring a constant supply of histones at sites of nucleosome assembly. [provided by RefSeq]</p>
Other Designations	CCG1-interacting factor A-II anti-silencing function 1B

Disease

- [Cardiovascular Diseases](#)
- [Diabetes Mellitus](#)
- [Edema](#)