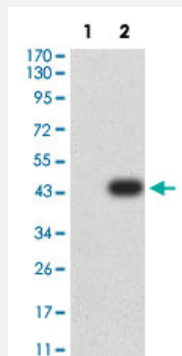


# ARFGAP1 monoclonal antibody, clone 1C4E2

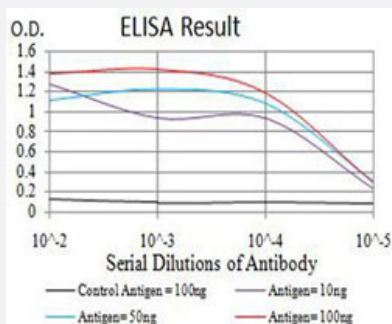
Catalog # MAB17901 Size 100 ug

## Applications



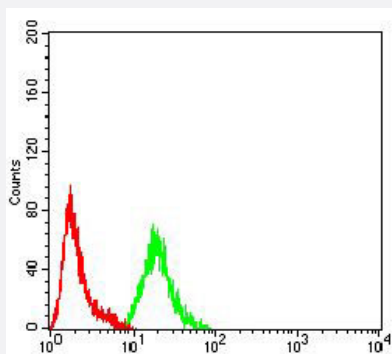
### Western Blot (Transfected lysate)

Western Blot analysis of Lane 1: HEK293 and Lane 2: ARFGAP1-hlgGfC transfected HEK293 cell lysates with ARFGAP1 monoclonal antibody, clone 1C4E2 (Cat # MAB17901).



### Enzyme-linked Immunoabsorbent Assay

ELISA analysis with ARFGAP1 monoclonal antibody, clone 1C4E2 (Cat # MAB17901).



### Flow Cytometry

Flow cytometric analysis of HepG2 cells with ARFGAP1 monoclonal antibody, clone 1C4E2 (Cat # MAB17901) (Green). Red: Negative Control.

## Specification

### Product Description

Mouse monoclonal antibody raised against partial recombinant human ARFGAP1.

Immunogen	Recombinant protein corresponding to amino acids 270-414 of human ARFGAP1.
Host	Mouse
Theoretical MW (kDa)	44.7
Reactivity	Human
Form	Liquid
Isotype	IgG2b
Recommend Usage	ELISA (1:10000) Flow Cytometry (1:200-1:400) Western Blot (1:100-1:500) The optimal working dilution should be determined by the end user.
Storage Buffer	In PBS (0.05% sodium azide).
Storage Instruction	Store at 4°C. For long term storage store at -20°C. Aliquot to avoid repeated freezing and thawing.
Note	This product contains sodium azide: a POISONOUS AND HAZARDOUS SUBSTANCE which should be handled by trained staff only.

## Applications

- Western Blot (Transfected lysate)

Western Blot analysis of Lane 1: HEK293 and Lane 2: ARFGAP1-hlgGfC transfected HEK293 cell lysates with ARFGAP1 monoclonal antibody, clone 1C4E2 (Cat # MAB17901).

- Enzyme-linked Immunoabsorbent Assay

ELISA analysis with ARFGAP1 monoclonal antibody, clone 1C4E2 (Cat # MAB17901).

- Flow Cytometry

Flow cytometric analysis of HepG2 cells with ARFGAP1 monoclonal antibody, clone 1C4E2 (Cat # MAB17901) (Green). Red: Negative Control.

## Gene Info — ARFGAP1

Entrez GeneID	<a href="#">55738</a>
Protein Accession#	<a href="#">Q8N6T3</a>
Gene Name	ARFGAP1

Gene Alias	ARF1GAP, HRIHFB2281, MGC39924
Gene Description	ADP-ribosylation factor GTPase activating protein 1
Omim ID	<a href="#">608377</a>
Gene Ontology	<a href="#">Hyperlink</a>
Gene Summary	<p>The protein encoded by this gene is a GTPase-activating protein (GAP) which associates with the Golgi apparatus and which interacts with ADP-ribosylation factor 1 (ARF1). The encoded protein promotes hydrolysis of ARF1-bound GTP and is required for the dissociation of coat proteins from Golgi-derived membranes and vesicles. Dissociation of the coat proteins is required for the fusion of these vesicles with target compartments. The activity of this protein is stimulated by phosphoinositides and inhibited by phosphatidylcholine. Two transcript variants encoding different isoforms have been found for this gene. [provided by RefSeq]</p>
Other Designations	ADP-ribosylation factor 1 GTPase activating protein ARF1-directed GTPase-activating protein GAP protein OTTHUMP00000031551

## Pathway

- [Endocytosis](#)