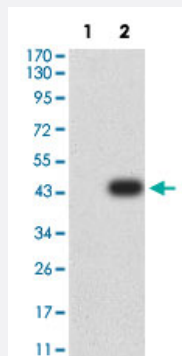


ASH2L monoclonal antibody, clone 6B10H10

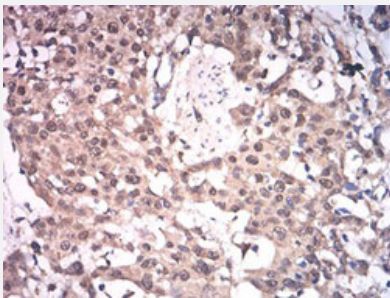
Catalog # MAB17894 Size 100 ug

Applications



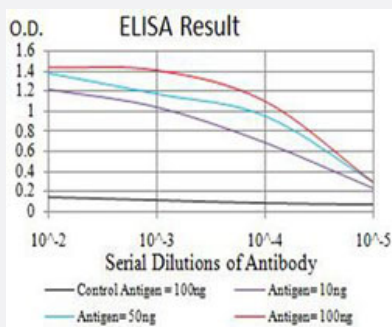
Western Blot (Transfected lysate)

Western Blot analysis of Lane 1: HEK293 and Lane 2: ASH2L-hlgGFc transfected HEK293 cell lysates with ASH2L monoclonal antibody, clone 6B10H10 (Cat # MAB17894).



Immunohistochemistry (Formalin/PFA-fixed paraffin-embedded sections)

Immunohistochemical staining (Formalin-fixed paraffin-embedded sections) of human esophagus cancer with ASH2L monoclonal antibody, clone 6B10H10 (Cat # MAB17894).



Enzyme-linked Immunoabsorbent Assay

ELISA analysis with ASH2L monoclonal antibody, clone 6B10H10 (Cat # MAB17894).

Specification

Product Description

Mouse monoclonal antibody raised against partial recombinant human ASH2L.

| | |
|----------------------|---|
| Immunogen | Recombinant protein corresponding to amino acids 493-628 of human ASH2L. |
| Host | Mouse |
| Theoretical MW (kDa) | 68.7 |
| Reactivity | Human |
| Form | Liquid |
| Isotype | IgG1 |
| Recommend Usage | ELISA (1:10000) Immunohistochemistry (Formalin/PFA-fixed paraffin-embedded sections) Western Blot (1:100-1:500) The optimal working dilution should be determined by the end user. |
| Storage Buffer | In PBS (0.05% sodium azide). |
| Storage Instruction | Store at 4°C. For long term storage store at -20°C. Aliquot to avoid repeated freezing and thawing. |
| Note | This product contains sodium azide: a POISONOUS AND HAZARDOUS SUBSTANCE which should be handled by trained staff only. |

Applications

- Western Blot (Transfected lysate)

Western Blot analysis of Lane 1: HEK293 and Lane 2: ASH2L-hlgGfC transfected HEK293 cell lysates with ASH2L monoclonal antibody, clone 6B10H10 (Cat # MAB17894).

- Immunohistochemistry (Formalin/PFA-fixed paraffin-embedded sections)

Immunohistochemical staining (Formalin-fixed paraffin-embedded sections) of human esophagus cancer with ASH2L monoclonal antibody, clone 6B10H10 (Cat # MAB17894).

- Enzyme-linked Immunoabsorbent Assay

ELISA analysis with ASH2L monoclonal antibody, clone 6B10H10 (Cat # MAB17894).

Gene Info — ASH2L

| | |
|--------------------|------------------------|
| Entrez GeneID | 9070 |
| Protein Accession# | Q9UBL3 |
| Gene Name | ASH2L |

| | |
|--------------------|---|
| Gene Alias | ASH2, ASH2L1, ASH2L2, Bre2 |
| Gene Description | ash2 (absent, small, or homeotic)-like (Drosophila) |
| Omim ID | 604782 |
| Gene Ontology | Hyperlink |
| Gene Summary | small |
| Other Designations | ash2-like |