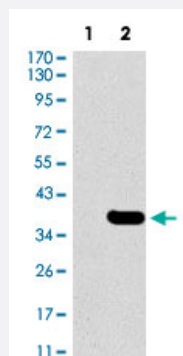


# SLC27A5 monoclonal antibody, clone 4B11C10

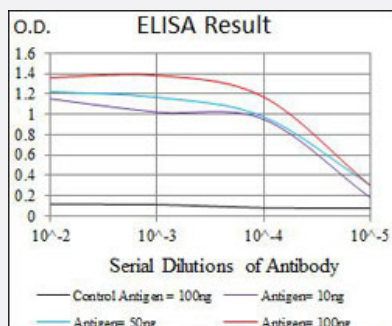
Catalog # MAB17882      Size 100 uL

## Applications



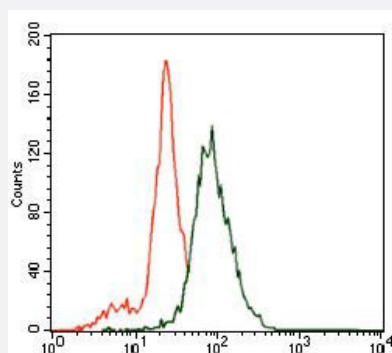
### Western Blot (Transfected lysate)

Western Blot analysis of Lane 1: HEK293 and Lane 2: SLC27A5-hlgGfC transfected HEK293 cell lysates with SLC27A5 monoclonal antibody, clone 4B11C10 (Cat # MAB17882).



### Enzyme-linked Immunoabsorbent Assay

ELISA analysis with SLC27A5 monoclonal antibody, clone 4B11C10 (Cat # MAB17882).



### Flow Cytometry

Flow cytometric analysis of SK-N-SH cells with SLC27A5 monoclonal antibody, clone 4B11C10 (Cat # MAB17882) (Green). Red: Negative Control.

## Specification

### Product Description

Mouse monoclonal antibody raised against partial recombinant human SLC27A5.

Immunogen	Recombinant protein corresponding to amino acids 508-570 of human SLC27A5.
Host	Mouse
Theoretical MW (kDa)	75.4
Reactivity	Human
Form	Liquid
Isotype	IgG1
Recommend Usage	ELISA (1:10000) Flow Cytometry (1:200-1:400) Western Blot (1:100-1:500) The optimal working dilution should be determined by the end user.
Storage Buffer	In ascitic fluid (0.03% sodium azide).
Storage Instruction	Store at 4°C. For long term storage store at -20°C. Aliquot to avoid repeated freezing and thawing.
Note	This product contains sodium azide: a POISONOUS AND HAZARDOUS SUBSTANCE which should be handled by trained staff only.

## Applications

- Western Blot (Transfected lysate)

Western Blot analysis of Lane 1: HEK293 and Lane 2: SLC27A5-hlgGfc transfected HEK293 cell lysates with SLC27A5 monoclonal antibody, clone 4B11C10 (Cat # MAB17882).

- Enzyme-linked Immunoabsorbent Assay

ELISA analysis with SLC27A5 monoclonal antibody, clone 4B11C10 (Cat # MAB17882).

- Flow Cytometry

Flow cytometric analysis of SK-N-SH cells with SLC27A5 monoclonal antibody, clone 4B11C10 (Cat # MAB17882) (Green).  
Red: Negative Control.

## Gene Info — SLC27A5

Entrez GeneID	<a href="#">10998</a>
Protein Accession#	<a href="#">Q9Y2P5</a>
Gene Name	SLC27A5

Gene Alias	ACSB, ACSVL6, FACVL3, FATP5, FLJ22987, VLACSR, VLCS-H2, VLC SH2
Gene Description	solute carrier family 27 (fatty acid transporter), member 5
Omim ID	<a href="#">603314</a>
Gene Ontology	<a href="#">Hyperlink</a>
Gene Summary	The protein encoded by this gene is an isozyme of very long-chain acyl-CoA synthetase (VLCS). It is capable of activating very long-chain fatty-acids containing 24- and 26-carbons. It is expressed in liver and associated with endoplasmic reticulum but not with peroxisomes. Its primary role is in fatty acid elongation or complex lipid synthesis rather than in degradation. This gene has a mouse ortholog. [provided by RefSeq]
Other Designations	fatty-acid-Coenzyme A ligase, very long-chain 3 very long-chain acyl-CoA synthetase homolog 2 very long-chain acyl-CoA synthetase-related protein

## Pathway

- [Metabolic pathways](#)
- [PPAR signaling pathway](#)
- [Primary bile acid biosynthesis](#)

## Disease

- [Diabetes Mellitus](#)
- [Genetic Predisposition to Disease](#)