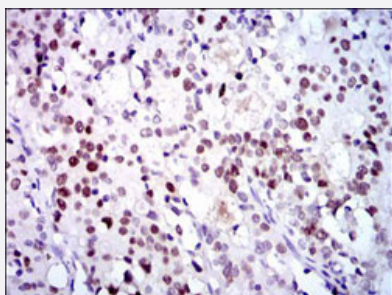


CDK2 monoclonal antibody, clone 1A6

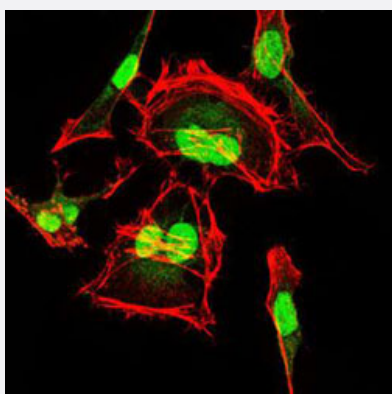
Catalog # MAB17871 Size 100 ug

Applications



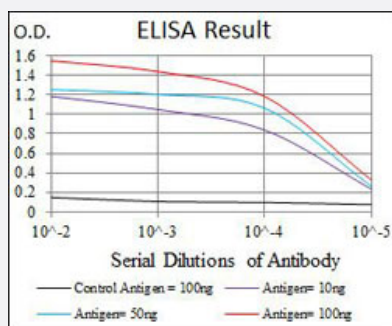
Immunohistochemistry (Formalin/PFA-fixed paraffin-embedded sections)

Immunohistochemical staining (Formalin-fixed paraffin-embedded sections) of human cervix cancer with CDK2 monoclonal antibody, clone 1A6 (Cat # MAB17871).



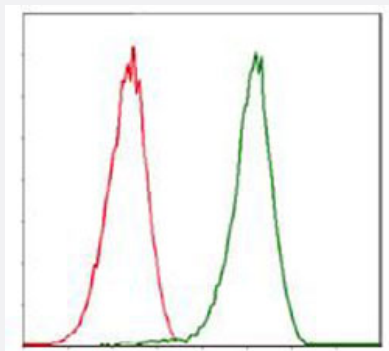
Immunofluorescence

Immunofluorescent staining of HeLa cells with CDK2 monoclonal antibody, clone 1A6 (Cat # MAB17871) (Green). Red: Actin filaments have been labeled with Alexa Fluor-555 phalloidin.



Enzyme-linked Immunoabsorbent Assay

ELISA analysis with CDK2 monoclonal antibody, clone 1A6 (Cat # MAB17871).



Flow Cytometry

Flow cytometric analysis of Jurkat cells with CDK2 monoclonal antibody, clone 1A6 (Cat # MAB17871) (Green). Red: Negative Control.

Specification

Product Description	Mouse monoclonal antibody raised against partial recombinant human CDK2.
Immunogen	Recombinant protein corresponding to amino acids 197-295 of human CDK2.
Host	Mouse
Theoretical MW (kDa)	33.9
Reactivity	Human
Form	Liquid
Isotype	IgG1
Recommend Usage	ELISA (1:10000) Flow Cytometry (1:200-1:400) Immunofluorescence (1:200-1:1000) Immunohistochemistry (Formalin/PFA-fixed paraffin-embedded sections) Western Blot (1:100-1:500) The optimal working dilution should be determined by the end user.
Storage Buffer	In PBS (0.05% sodium azide).
Storage Instruction	Store at 4°C. For long term storage store at -20°C. Aliquot to avoid repeated freezing and thawing.
Note	This product contains sodium azide: a POISONOUS AND HAZARDOUS SUBSTANCE which should be handled by trained staff only.

Applications

- Western Blot

- Immunohistochemistry (Formalin/PFA-fixed paraffin-embedded sections)

Immunohistochemical staining (Formalin-fixed paraffin-embedded sections) of human cervix cancer with CDK2 monoclonal antibody, clone 1A6 (Cat # MAB17871).

- Immunofluorescence

Immunofluorescent staining of HeLa cells with CDK2 monoclonal antibody, clone 1A6 (Cat # MAB17871) (Green). Red: Actin filaments have been labeled with Alexa Fluor-555 phalloidin.

- Enzyme-linked Immunoabsorbent Assay

ELISA analysis with CDK2 monoclonal antibody, clone 1A6 (Cat # MAB17871).

- Flow Cytometry

Flow cytometric analysis of Jurkat cells with CDK2 monoclonal antibody, clone 1A6 (Cat # MAB17871) (Green). Red: Negative Control.

Gene Info — CDK2

Entrez GeneID [1017](#)

Protein Accession# [P24941](#)

Gene Name CDK2

Gene Alias p33(CDK2)

Gene Description cyclin-dependent kinase 2

Omim ID [116953](#)

Gene Ontology [Hyperlink](#)

Gene Summary

The protein encoded by this gene is a member of the Ser/Thr protein kinase family. This protein kinase is highly similar to the gene products of *S. cerevisiae* cdc28, and *S. pombe* cdc2. It is a catalytic subunit of the cyclin-dependent protein kinase complex, whose activity is restricted to the G1-S phase, and essential for cell cycle G1/S phase transition. This protein associates with and regulated by the regulatory subunits of the complex including cyclin A or E, CDK inhibitor p21Cip1 (CDKN1A) and p27Kip1 (CDKN1B). Its activity is also regulated by its protein phosphorylation. Two alternatively spliced variants and multiple transcription initiation sites of this gene have been reported. [provided by RefSeq]

Other Designations cdc2-related protein kinase|cell division kinase 2|p33 protein kinase

Pathway

- [Cell cycle](#)
- [p53 signaling pathway](#)
- [Pathways in cancer](#)
- [Prostate cancer](#)
- [Small cell lung cancer](#)

Disease

- [Azoospermia](#)
- [Breast cancer](#)
- [Breast Neoplasms](#)
- [Chromosome Aberrations](#)
- [Diabetes Mellitus](#)
- [Genetic Predisposition to Disease](#)
- [Kidney Failure](#)
- [Lymphoma](#)
- [Neoplasm Invasiveness](#)
- [Ovarian cancer](#)
- [Ovarian Neoplasms](#)