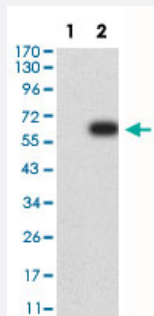


# AOF2 monoclonal antibody, clone 3F9A3

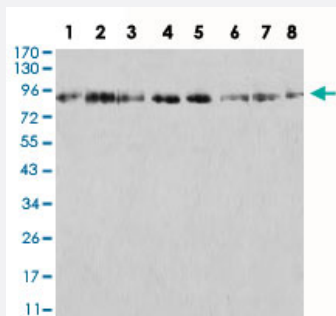
Catalog # MAB17849      Size 100 ug

## Applications



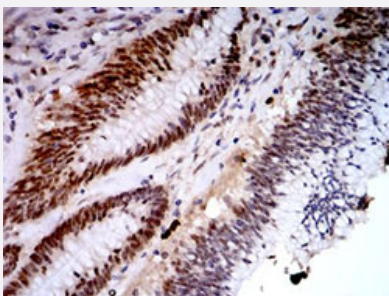
### Western Blot (Transfected lysate)

Western Blot (Transfected lysate) analysis of (1) HEK293, (2) AOF2-hlgGFc transfected HEK293 cell lysate.



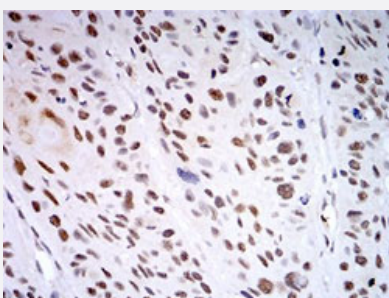
### Western Blot

Western Blot analysis of (1) SK-BR-3, (2) K562, (3) SW480, (4) Jurkat, (5) HeLa, (6) COS7, (7) T47D, (8) HCT116 cell lysate.



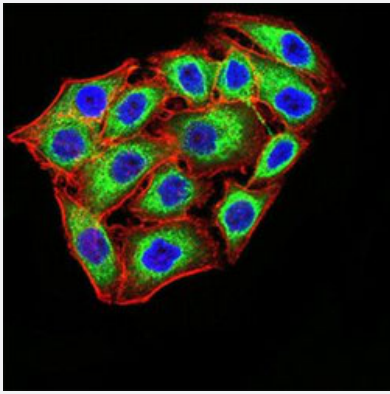
### Immunohistochemistry (Formalin/PFA-fixed paraffin-embedded sections)

Immunohistochemical staining of colon cancer tissues with DAB staining.



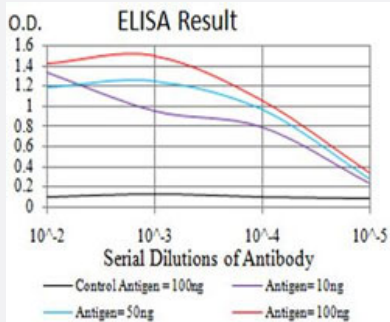
### Immunohistochemistry (Formalin/PFA-fixed paraffin-embedded sections)

Immunohistochemical staining of esophageal cancer tissues with DAB staining.



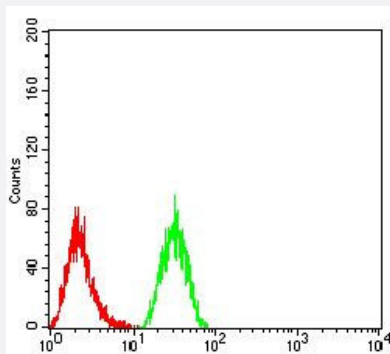
## Immunofluorescence

Immunofluorescent staining of MCF-7 cell line with antibody (green). Blue: DRAQ5 fluorescent DNA dye. Red: Actin filaments have been labeled with Alexa Fluor-555 phalloidin.



## Enzyme-linked Immunoabsorbent Assay

ELISA analysis of AOF2 monoclonal antibody.



## Flow Cytometry

Flow cytometric analysis of HeLa cells using AOF2 mouse monoclonal antibody (green) and negative control (red).

## Specification

Product Description	Mouse monoclonal antibody raised against recombinant human AOF2.
Immunogen	Recombinant protein corresponding to amino acids 55-263 of human AOF2 from <i>E. coli</i> .
Host	Mouse
Theoretical MW (kDa)	93
Reactivity	Human, Monkey
Form	Liquid
Isotype	IgG1

<b>Recommend Usage</b>	ELISA (1:10000) Flow Cytometry (1:200-400) Immunofluorescence (1:200-1000) Immunohistochemistry (Formalin/PFA-fixed paraffin-embedded sections) Western Blot (1:100-1:500) The optimal working dilution should be determined by the end user.
<b>Storage Buffer</b>	In PBS (0.05% sodium azide).
<b>Storage Instruction</b>	Store at 4°C. For long term storage store at -20°C. Aliquot to avoid repeated freezing and thawing.
<b>Note</b>	This product contains sodium azide: a POISONOUS AND HAZARDOUS SUBSTANCE which should be handled by trained staff only.

## Applications

- Western Blot (Transfected lysate)

Western Blot (Transfected lysate) analysis of (1) HEK293, (2) AOF2-hlgGfC transfected HEK293 cell lysate.

- Western Blot

Western Blot analysis of (1) SK-Br-3, (2) K562, (3) SW480, (4) Jurkat, (5) HeLa, (6) COS7, (7) T47D, (8) HCT116 cell lysate.

- Immunohistochemistry (Formalin/PFA-fixed paraffin-embedded sections)

Immunohistochemical staining of colon cancer tissues with DAB staining.

- Immunohistochemistry (Formalin/PFA-fixed paraffin-embedded sections)

Immunohistochemical staining of esophageal cancer tissues with DAB staining.

- Immunofluorescence

Immunofluorescent staining of MCF-7 cell line with antibody (green). Blue: DRAQ5 fluorescent DNA dye. Red: Actin filaments have been labeled with Alexa Fluor-555 phalloidin.

- Enzyme-linked Immunoabsorbent Assay

ELISA analysis of AOF2 monoclonal antibody.

- Flow Cytometry

Flow cytometric analysis of HeLa cells using AOF2 mouse monoclonal antibody (green) and negative control (red).

## Gene Info — AOF2

Entrez GeneID	<a href="#">23028</a>
Gene Name	AOF2
Gene Alias	BHC110, KDM1, KIAA0601, LSD1
Gene Description	amine oxidase (flavin containing) domain 2
Omim ID	<a href="#">609132</a>
Gene Ontology	<a href="#">Hyperlink</a>
Gene Summary	This gene encodes a nuclear protein containing a SWIRM domain, a FAD-binding motif, and an amine oxidase domain. This protein is a component of several histone deacetylase complexes, through it silences genes by functioning as a histone demethylase. Alternative splicing results in multiple transcript variants. [provided by RefSeq]
Other Designations	BRAF35-HDAC complex protein BHC110 FAD-binding protein BRAF35-HDAC complex, 110 kDa subunit lysine (K)-specific demethylase 1 lysine-specific histone demethylase 1