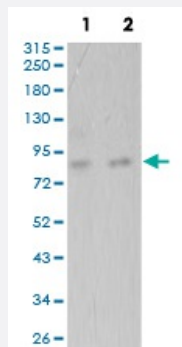


# ADAMTS1 monoclonal antibody, clone 1G5D5

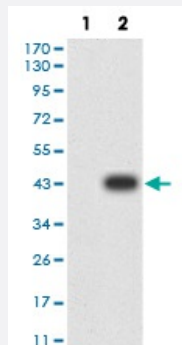
Catalog # MAB17837      Size 100 ug

## Applications



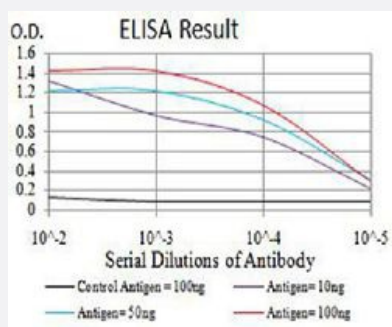
### Western Blot (Cell lysate)

Western blot analysis of (1) HeLa cell, (2) SK-Br-3 cell with ADAMTS1 monoclonal antibody.



### Western Blot (Transfected lysate)

Western blot analysis of (1) HEK293 cells, (2) ADAMTS1-hlgGfC transfected HEK293 cell lysate with ADAMTS1 monoclonal antibody.



### Enzyme-linked Immunoabsorbent Assay

ELISA analysis of ADAMTS1 monoclonal antibody, clone 1G5D5.

## Specification

### Product Description

Mouse monoclonal antibody raised against recombinant human ADAMTS1.

Immunogen	Recombinant protein corresponding to amino acids 858-960 of human ADAMTS1 from <i>E. coli</i> .
Host	Mouse
Theoretical MW (kDa)	147
Reactivity	Human
Form	Liquid
Isotype	IgG1
Recommend Usage	ELISA (1:10000) Flow Cytometry Immunocytochemistry Immunohistochemistry Western Blot (1:500-1:2000) The optimal working dilution should be determined by the end user.
Storage Buffer	In PBS (0.05% sodium azide).
Storage Instruction	Store at 4°C. For long term storage store at -20°C. Aliquot to avoid repeated freezing and thawing.
Note	This product contains sodium azide: a POISONOUS AND HAZARDOUS SUBSTANCE which should be handled by trained staff only.

## Applications

- Western Blot (Cell lysate)

Western blot analysis of (1) HeLa cell, (2) SK-Br-3 cell with ADAMTS1 monoclonal antibody.

- Western Blot (Transfected lysate)

Western blot analysis of (1) HEK293 cells, (2) ADAMTS1-hlgFc transfected HEK293 cell lysate with ADAMTS1 monoclonal antibody.

- Enzyme-linked Immunoabsorbent Assay

ELISA analysis of ADAMTS1 monoclonal antibody, clone 1G5D5.

## Gene Info — ADAMTS1

Entrez GeneID [9510](#)

Gene Name ADAMTS1

Gene Alias	C3-C5, KIAA1346, METH1
Gene Description	ADAM metallopeptidase with thrombospondin type 1 motif, 1
Omim ID	<a href="#">605174</a>
Gene Ontology	<a href="#">Hyperlink</a>
Gene Summary	<p>This gene encodes a member of the ADAMTS (a disintegrin and metalloproteinase with thrombospondin motif) protein family. Members of the family share several distinct protein modules, including a propeptide region, a metalloproteinase domain, a disintegrin-like domain, and a thrombospondin type 1 (TS) motif. Individual members of this family differ in the number of C-terminal TS motifs, and some have unique C-terminal domains. The protein encoded by this gene contains two disintegrin loops and three C-terminal TS motifs and has anti-angiogenic activity. The expression of this gene may be associated with various inflammatory processes as well as development of cancer cachexia. This gene is likely to be necessary for normal growth, fertility, and organ morphology and function. [provided by RefSeq]</p>
Other Designations	a disintegrin-like and metalloprotease (reprolysin type) with thrombospondin type 1 motif, 1 human metalloproteinase with thrombospondin type 1 motifs

## Disease

- [Brain Ischemia](#)
- [Cardiovascular Diseases](#)
- [Coronary Disease](#)
- [Genetic Predisposition to Disease](#)
- [Kidney Failure](#)
- [Myocardial Infarction](#)
- [Stroke](#)