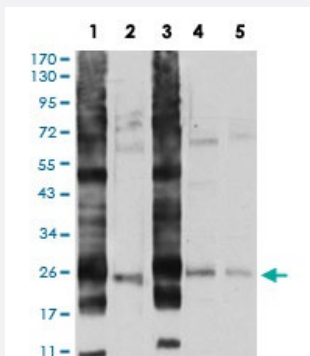


# RALB monoclonal antibody, clone 8A8A9

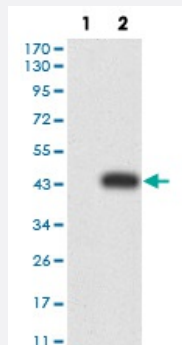
Catalog # MAB17829      Size 100 ug

## Applications



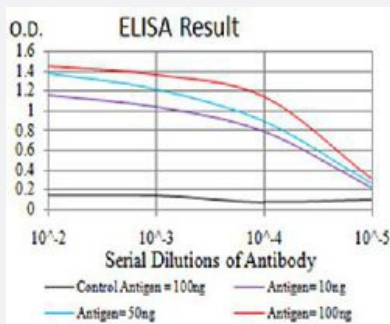
### Western Blot (Cell lysate)

Western blot analysis of (1) A549 cell, (2) U251 cell, (3) HT-29 cell, (4) HEK293 cell, (5) LOVO cell with RALB monoclonal antibody.



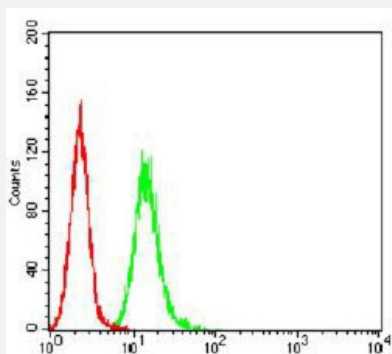
### Western Blot (Transfected lysate)

Western blot analysis of (1) HEK293 cells, (2) RALB-hlgGfc transfected HEK293 cell lysate with RALB monoclonal antibody.



### Enzyme-linked Immunoabsorbent Assay

ELISA analysis of RALB monoclonal antibody, clone 8A8A9.



## Flow Cytometry

Flow cytometric analysis of HeLa cells with RALB monoclonal antibody (green) and negative control (red).

## Specification

<b>Product Description</b>	Mouse monoclonal antibody raised against recombinant human RALB.
<b>Immunogen</b>	Recombinant protein corresponding to amino acids 89-206 of human RALB from <i>E. coli</i> .
<b>Host</b>	Mouse
<b>Theoretical MW (kDa)</b>	82.4
<b>Reactivity</b>	Human
<b>Form</b>	Liquid
<b>Isotype</b>	IgG2a
<b>Recommend Usage</b>	ELISA (1:10000) Flow Cytometry (1:200-1:400) Immunocytochemistry Immunohistochemistry Western Blot (1:500-1:2000) The optimal working dilution should be determined by the end user.
<b>Storage Buffer</b>	In PBS (0.05% sodium azide).
<b>Storage Instruction</b>	Store at 4°C. For long term storage store at -20°C. Aliquot to avoid repeated freezing and thawing.
<b>Note</b>	This product contains sodium azide: a POISONOUS AND HAZARDOUS SUBSTANCE which should be handled by trained staff only.

## Applications

- Western Blot (Cell lysate)

Western blot analysis of (1) A549 cell, (2) U251 cell, (3) HT-29 cell, (4) HEK293 cell, (5) LOVO cell with RALB monoclonal antibody.

- Western Blot (Transfected lysate)

Western blot analysis of (1) HEK293 cells, (2) RALB-hlgGFc transfected HEK293 cell lysate with RALB monoclonal antibody.

- Enzyme-linked Immunoabsorbent Assay

ELISA analysis of RALB monoclonal antibody, clone 8A8A9.

- Flow Cytometry

Flow cytometric analysis of HeLa cells with RALB monoclonal antibody (green) and negative control (red).

## Gene Info — RALB

Entrez GeneID	<a href="#">5899</a>
Gene Name	RALB
Gene Alias	-
Gene Description	v-ral simian leukemia viral oncogene homolog B (ras related; GTP binding protein)
Omim ID	<a href="#">179551</a>
Gene Ontology	<a href="#">Hyperlink</a>
Gene Summary	This gene encodes a GTP-binding protein that belongs to the small GTPase superfamily and Ras family of proteins. GTP-binding proteins mediate the transmembrane signaling initiated by the occupancy of certain cell surface receptors. [provided by RefSeq]
Other Designations	GTP binding protein RAS-like protein B v-ral simian leukemia viral oncogene homolog B

## Pathway

- [Pancreatic cancer](#)
- [Pathways in cancer](#)

## Disease

- [Tobacco Use Disorder](#)