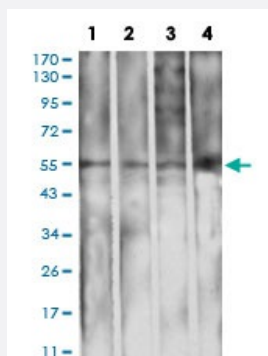


IGHA1 monoclonal antibody, clone 7D5F12

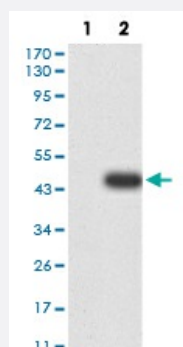
Catalog # MAB17822 Size 100 ug

Applications



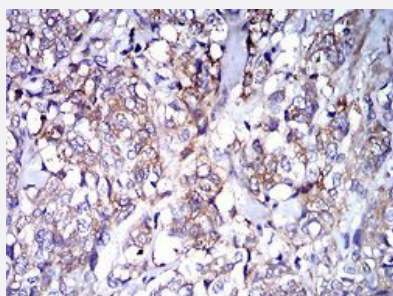
Western Blot (Cell lysate)

Western blot analysis of (1) L1210 cell, (2) THP-1 cell, (3) HepG2 cell, (4) COS7 cell with IGH A1 monoclonal antibody.



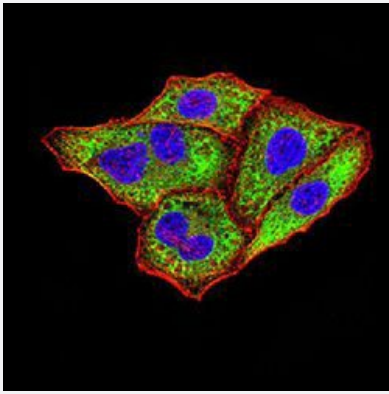
Western Blot (Transfected lysate)

Western blot analysis of (1) HEK293 cells, (2) IGH A1-hlgGFc transfected HEK293 cell lysate with IGH A1 monoclonal antibody.



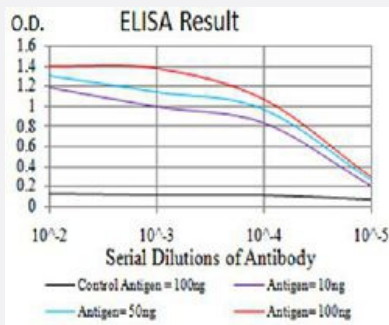
Immunohistochemistry (Formalin/PFA-fixed paraffin-embedded sections)

Immunohistochemical staining of paraffin-embedded breast cancer tissue with IGH A1 monoclonal antibody.



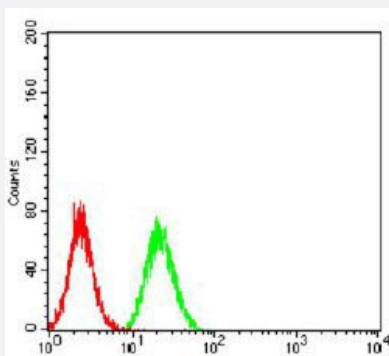
Immunocytochemistry

Immunocytochemical staining of HeLa cells with IGHA1 monoclonal antibody (green). DRAQ5 fluorescent DNA dye (blue). Actin filaments labeled with Alexa Fluor-555 phalloidin (red).



Enzyme-linked Immunoabsorbent Assay

ELISA analysis of IGHA1 monoclonal antibody, clone 7D5F12.



Flow Cytometry

Flow cytometric analysis of HeLa cells with IGHA1 monoclonal antibody (green) and negative control (red).

Specification

Product Description	Mouse monoclonal antibody raised against recombinant human IGHA1.
Immunogen	Recombinant protein corresponding to amino acids 207-353 of human IGHA1 from <i>E. coli</i> .
Host	Mouse
Theoretical MW (kDa)	37.6
Reactivity	Human, Monkey, Mouse
Form	Liquid
Isotype	IgG1

Recommend Usage	ELISA (1:10000) Flow Cytometry (1:200-1:400) Immunocytochemistry (1:50-1:250) Immunohistochemistry (1:200-1:1000) Western Blot (1:500-1:2000) The optimal working dilution should be determined by the end user.
Storage Buffer	In PBS (0.05% sodium azide).
Storage Instruction	Store at 4°C. For long term storage store at -20°C. Aliquot to avoid repeated freezing and thawing.
Note	This product contains sodium azide: a POISONOUS AND HAZARDOUS SUBSTANCE which should be handled by trained staff only.

Applications

- Western Blot (Cell lysate)

Western blot analysis of (1) L1210 cell, (2) THP-1 cell, (3) HepG2 cell, (4) COS7 cell with IGHA1 monoclonal antibody.

- Western Blot (Transfected lysate)

Western blot analysis of (1) HEK293 cells, (2) IGHA1-hlgGFc transfected HEK293 cell lysate with IGHA1 monoclonal antibody.

- Immunohistochemistry (Formalin/PFA-fixed paraffin-embedded sections)

Immunohistochemical staining of paraffin-embedded breast cancer tissue with IGHA1 monoclonal antibody.

- Immunocytochemistry

Immunocytochemical staining of HeLa cells with IGHA1 monoclonal antibody (green). DRAQ5 fluorescent DNA dye (blue). Actin filaments labeled with Alexa Fluor-555 phalloidin (red).

- Enzyme-linked Immunoabsorbent Assay

ELISA analysis of IGHA1 monoclonal antibody, clone 7D5F12.

- Flow Cytometry

Flow cytometric analysis of HeLa cells with IGHA1 monoclonal antibody (green) and negative control (red).

Gene Info — IGHA1

Entrez GeneID

[3493](#)

Gene Name

IGHA1

Gene Alias	FLJ14473, FLJ35065, FLJ35500, FLJ36402, FLJ39698, FLJ40001, FLJ41548, FLJ41552, FLJ41789, FLJ43248, FLJ43594, FLJ44293, FLJ46028, FLJ46621, FLJ46724, FLJ46811, FLJ46824, IgA1, MGC102857
Gene Description	immunoglobulin heavy constant alpha 1
Omim ID	146900
Gene Ontology	Hyperlink
Other Designations	-

Disease

- [IgA Deficiency](#)