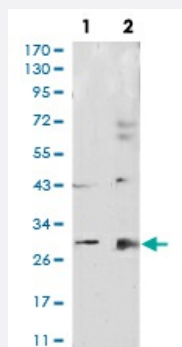


# CALB2 monoclonal antibody, clone 7H1G3

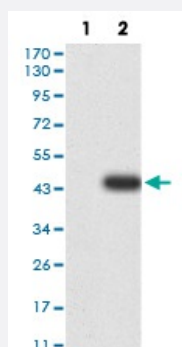
Catalog # MAB17821      Size 100 ug

## Applications



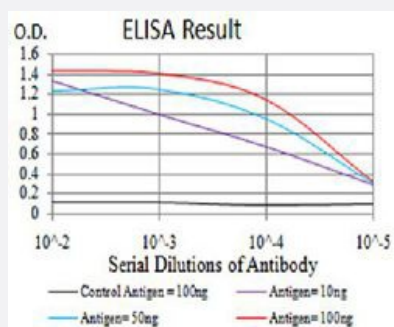
### Western Blot (Cell lysate)

Western blot analysis of (1) HepG2 cell, (2) COS7 cell with CALB2 monoclonal antibody.



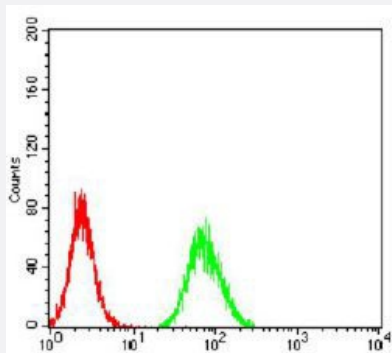
### Western Blot (Transfected lysate)

Western blot analysis of (1) HEK293 cells, (2) CALB2-hlgGfC transfected HEK293 cell lysate with CALB2 monoclonal antibody.



### Enzyme-linked Immunoabsorbent Assay

ELISA analysis of CALB2 monoclonal antibody, clone 7H1G3.



## Flow Cytometry

Flow cytometric analysis of HeLa cells with CALB2 monoclonal antibody (green) and negative control (red).

## Specification

|                             |   |
|-----------------------------|---|
| <b>Product Description</b>  | Mouse monoclonal antibody raised against recombinant human CALB2.   |
| <b>Immunogen</b>            | Recombinant protein corresponding to amino acids 172-271 of human CALB2 from <i>E. coli</i> .   |
| <b>Host</b>                 | Mouse   |
| <b>Theoretical MW (kDa)</b> | 31.5  |
| <b>Reactivity</b>           | Human, Monkey   |
| <b>Form</b>                 | Liquid  |
| <b>Isotype</b>              | IgG1  |
| <b>Recommend Usage</b>      | ELISA (1:10000)<br>Flow Cytometry (1:200-1:400)<br>Immunocytochemistry<br>Immunohistochemistry<br>Western Blot (1:500-1:2000)<br>The optimal working dilution should be determined by the end user. |
| <b>Storage Buffer</b>       | In PBS (0.05% sodium azide).  |
| <b>Storage Instruction</b>  | Store at 4°C. For long term storage store at -20°C.<br>Aliquot to avoid repeated freezing and thawing.  |
| <b>Note</b>                 | This product contains sodium azide: a POISONOUS AND HAZARDOUS SUBSTANCE which should be handled by trained staff only.  |

## Applications

- Western Blot (Cell lysate)

Western blot analysis of (1) HepG2 cell, (2) COS7 cell with CALB2 monoclonal antibody.

- Western Blot (Transfected lysate)

Western blot analysis of (1) HEK293 cells, (2) CALB2-hlgGfc transfected HEK293 cell lysate with CALB2 monoclonal antibody.

- Enzyme-linked Immunoabsorbent Assay

ELISA analysis of CALB2 monoclonal antibody, clone 7H1G3.

- Flow Cytometry

Flow cytometric analysis of HeLa cells with CALB2 monoclonal antibody (green) and negative control (red).

## Gene Info — CALB2

Entrez GeneID [794](#)

Gene Name CALB2

Gene Alias CAL2

Gene Description calbindin 2

Omim ID [114051](#)

Gene Ontology [Hyperlink](#)

**Gene Summary** This gene encodes an intracellular calcium-binding protein belonging to the troponin C superfamily. Members of this protein family have six EF-hand domains which bind calcium. Three alternatively spliced transcript variants that encode different proteins have been described. [provided by RefSeq]

**Other Designations** calbindin 2, (29kD, calretinin)|calbindin D29K|calretinin

## Disease

- [Colon cancer](#)
- [Colonic Neoplasms](#)
- [Genetic Predisposition to Disease](#)