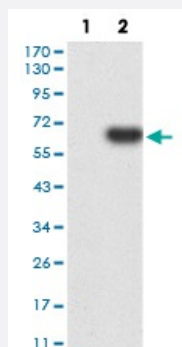


EIF5 monoclonal antibody, clone 6D6H11

Catalog # MAB17817

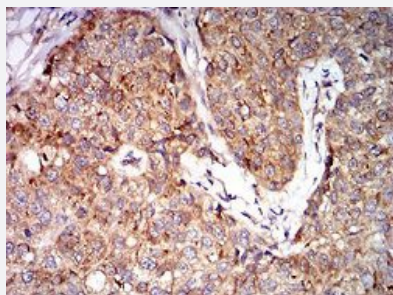
Size 100 ug

Applications



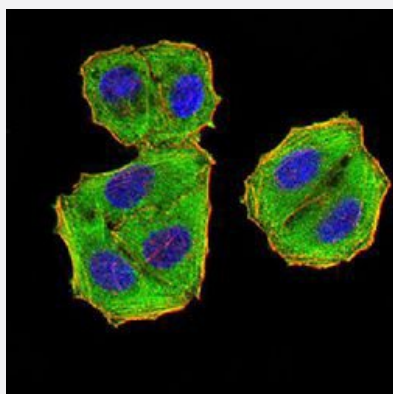
Western Blot (Transfected lysate)

Western blot analysis of (1) HEK293 cells, (2) EIF5-hlgGfc transfected HEK293 cell lysate with EIF5 monoclonal antibody.



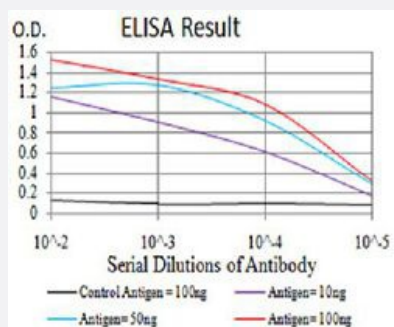
Immunohistochemistry (Formalin/PFA-fixed paraffin-embedded sections)

Immunohistochemical staining of paraffin-embedded bladder cancer tissue with EIF5 monoclonal antibody.



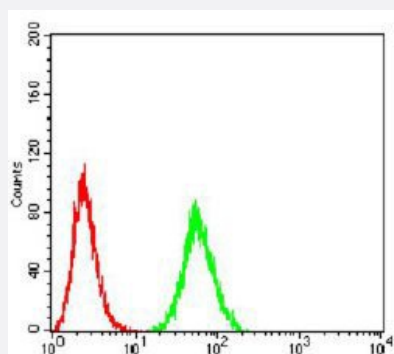
Immunocytochemistry

Immunocytochemical staining of HeLa cells with EIF5 monoclonal antibody (green). DRAQ5 fluorescent DNA dye (blue). Actin filaments labeled with Alexa Fluor-555 phalloidin (red).



Enzyme-linked Immunoabsorbent Assay

ELISA analysis of EIF5 monoclonal antibody, clone 6D6H11.



Flow Cytometry

Flow cytometric analysis of HeLa cells with EIF5 monoclonal antibody (green) and negative control (red).

Specification

Product Description	Mouse monoclonal antibody raised against recombinant human EIF5.
Immunogen	Recombinant protein corresponding to amino acids 1-300 of human EIF5 from <i>E. coli</i> .
Host	Mouse
Theoretical MW (kDa)	49.2
Reactivity	Human
Form	Liquid
Isotype	IgG2a
Recommend Usage	ELISA (1:10000) Flow Cytometry (1:200-1:400) Immunocytochemistry (1:50-1:250) Immunohistochemistry (1:200-1:1000) Western Blot (1:500-1:2000) The optimal working dilution should be determined by the end user.
Storage Buffer	In PBS (0.05% sodium azide).
Storage Instruction	Store at 4°C. For long term storage store at -20°C. Aliquot to avoid repeated freezing and thawing.

Note

This product contains sodium azide: a POISONOUS AND HAZARDOUS SUBSTANCE which should be handled by trained staff only.

Applications

- Western Blot (Transfected lysate)

Western blot analysis of (1) HEK293 cells, (2) EIF5-hlgGfc transfected HEK293 cell lysate with EIF5 monoclonal antibody.

- Immunohistochemistry (Formalin/PFA-fixed paraffin-embedded sections)

Immunohistochemical staining of paraffin-embedded bladder cancer tissue with EIF5 monoclonal antibody.

- Immunocytochemistry

Immunocytochemical staining of HeLa cells with EIF5 monoclonal antibody (green). DRAQ5 fluorescent DNA dye (blue). Actin filaments labeled with Alexa Fluor-555 phalloidin (red).

- Enzyme-linked Immunoabsorbent Assay

ELISA analysis of EIF5 monoclonal antibody, clone 6D6H11.

- Flow Cytometry

Flow cytometric analysis of HeLa cells with EIF5 monoclonal antibody (green) and negative control (red).

Gene Info — EIF5

Entrez GeneID	1983
Gene Name	EIF5
Gene Alias	EIF-5, EIF-5A
Gene Description	eukaryotic translation initiation factor 5
Omim ID	601710
Gene Ontology	Hyperlink
Other Designations	-