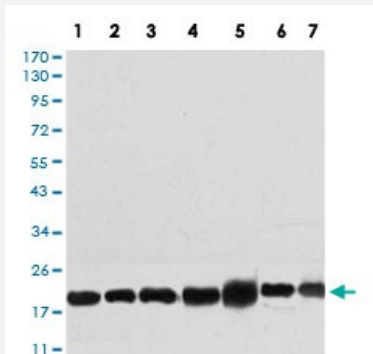


RPL18A monoclonal antibody, clone 6G6G10

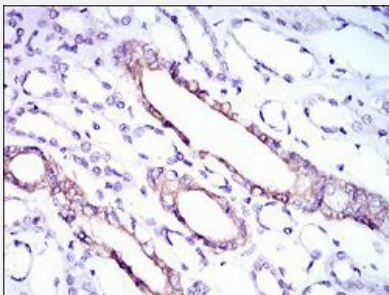
Catalog # MAB17808 Size 100 ug

Applications



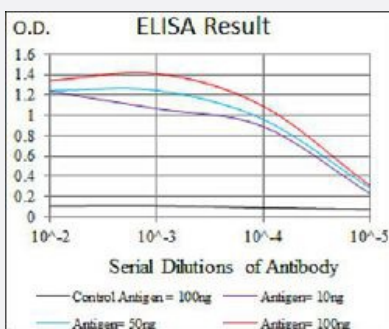
Western Blot (Cell lysate)

Western blot analysis of (1) NIH/3T3 cell, (2) HEK293 cell, (3) HL60 cell, (4) Jurkat cell, (5) Raji cell, (6) MOLT4 cell, (7) HeLa cell with RPL18A monoclonal antibody.



Immunohistochemistry (Formalin/PFA-fixed paraffin-embedded sections)

Immunohistochemical staining of paraffin-embedded kidney tissue with RPL18A monoclonal antibody.



Enzyme-linked Immunoabsorbent Assay

ELISA analysis of RPL18A monoclonal antibody, clone 6G6G10.

Specification

Product Description

Mouse monoclonal antibody raised against recombinant human RPL18A.

Immunogen	Recombinant protein corresponding to amino acids 50-176 of human RPL18A from <i>E. coli</i> .
Host	Mouse
Theoretical MW (kDa)	20.8
Reactivity	Human, Mouse
Form	Liquid
Isotype	IgG1
Recommend Usage	ELISA (1:10000) Flow Cytometry Immunocytochemistry Immunohistochemistry (1:200-1:1000) Western Blot (1:500-1:2000) The optimal working dilution should be determined by the end user.
Storage Buffer	In PBS (0.05% sodium azide).
Storage Instruction	Store at 4°C. For long term storage store at -20°C. Aliquot to avoid repeated freezing and thawing.
Note	This product contains sodium azide: a POISONOUS AND HAZARDOUS SUBSTANCE which should be handled by trained staff only.

Applications

- Western Blot (Cell lysate)

Western blot analysis of (1) NIH/3T3 cell, (2) HEK293 cell, (3) HL60 cell, (4) Jurkat cell, (5) Raji cell, (6) MOLT4 cell, (7) HeLa cell with RPL18A monoclonal antibody.

- Immunohistochemistry (Formalin/PFA-fixed paraffin-embedded sections)

Immunohistochemical staining of paraffin-embedded kidney tissue with RPL18A monoclonal antibody.

- Enzyme-linked Immunoabsorbent Assay

ELISA analysis of RPL18A monoclonal antibody, clone 6G6G10.

Gene Info — RPL18A

Entrez GeneID [6142](#)

Gene Name RPL18A

Gene Alias	-
Gene Description	ribosomal protein L18a
Omim ID	604178
Gene Ontology	Hyperlink
Gene Summary	<p>Ribosomes, the organelles that catalyze protein synthesis, consist of a small 40S subunit and a large 60S subunit. Together these subunits are composed of 4 RNA species and approximately 80 structurally distinct proteins. This gene encodes a ribosomal protein that is a component of the 60S subunit. The protein belongs to the L18AE family of ribosomal proteins. It is located in the cytoplasm. This gene is co-transcribed with the U68 snoRNA, which is located in its third intron. As is typical for genes encoding ribosomal proteins, there are multiple processed pseudogenes of this gene dispersed through the genome. [provided by RefSeq]</p>
Other Designations	60S ribosomal protein L18a ribosomal protein L18a-like protein

Pathway

- [Ribosome](#)